

five-foot lengths, which he ate as a schoolboy would liquorice. But, notwithstanding all this, he is gone, but not forgotten by the iron-mongers.

everything before it, until brought to a stand by a phalanx of mules in Calle Reconquista. There was now a dispersion and an interposition of passengers: "Omnia gathrum spicillegium" roared out the Chief, with electrical effect; mayoral after mayoral cleared out "hand passibus equis" car shoved back upon car "per saltum longo intervallo." Most of the crowd seemed Latin scholars; Mr. Furze, of the telegraph office, came out, and, leaning over one of the chaises, he shouted out, "Ecco iterum crispium!" This brought up a fixed bayonet that went slap-dash into the panel of the car, the soldier, as he backed the vehicle, crying out, "Eheu fugaces labuntur tramitii!" Then the Lacrosse car backed, the Billinghurst pushed on, and one of the elated passengers, determined not to be outdone by a policeman or an electrician, shouted at the driver, "Ignis viam ignis viam!" and the crowd "mizzelavit."

ON 'CHANGE. August 26th, 1873. Ounce 400 Sovereigns 122 1/2 Plata 25 National Bonds 74 1/2 Cables 88

of Charles Parsons deceased late American Consul in that City will be sold by judicial sale on 18th prox. The sale of 2,000 bottles of French wine by Messrs Piaggio & Co. of Montevideo to Le Hir Barnett & Co. is reported from that market, the importance of the sale is derived from the fact that the wine was bought for shipment to the West Coast and forwarded by the steamer Etiole de Chilo. It seems after all that these new Pacific lines have opened a new market to River Plate trade.

B. Aires Great Southern Railway Company (LIMITED) DOLORES EXTENSION. Notice is hereby given, that by resolution of the Board of Directors of this Company, under date of the 27th of June last, the second call of \$2.10s per share, on the Dolores Extension Shares will become payable on the 8th of September next.

PONTEVEDRA AN ENTIRE SET OF Walnut Chamber Furniture, BED, BUREAU, WASHSTAND, Night Table, Towel Stand, Chairs, and Hocking Chair, for \$3,000 m/c.

THE RIBBON STAMP With DATES OF WITHOUT. Used in all Banks, Government Offices, and Houses of Commerce. Also RIBBONS for same always on hand.

Down came the battalion, charging

and hearty.

Grime Rampant. So strong a hold does ruffianism appear to have got in this good city, that we should not be surprised to hear that the

CUYO 116.

CUYO 116.

CUYO 116.

CUYO 116.

SAVINGS BANK BANK MAUA AND CO. 101-Calle Cangallo-103 BUENOS AYRES.

The immense advantages of Accounts Current are now so generally felt and appreciated in the great emporium of the River Plate, Montevideo, and Buenos Ayres, that there are very few Merchants who fail to keep one at the bank in which they place the most confidence.

CONDITIONS.

First—The Bank receives at interest any sum from Twenty-five Dollars currency or one Silver Dollar upwards.

CELEBRATED SHEEP-DIP.

LICOR DERMATOSICO.

Prepared by TORRE and BARTON, Druggists DEFENSA, 65, 67, and 69.

Infallible for the Cure of Scab in Sheep.

After long and innumerable trials, we have succeeded in preparing the above Sheep-dip, by the use of which we guarantee the thorough eradication of Scab in Sheep.

AGENTS.

O'GORMAN & DANSEY, Guardia del Monte. TORROBA HERMANOS, Lujan, Mercedes, and Chivilcoy.

Great Fancy Iron House.

LEROY AND CO.

Nos. 55, 57, 59 Calle Cuyo.

WHOLESALE AND RETAIL DEALERS.

In this Establishment will be found the very best articles in the Hardware Fancy Trade.

For the convenience of engineers, architects, master bricklayers, blacksmiths, private parties building, or, in fact, any one else whom it may interest, we have classified the large and varied stock, under the three general headings: Buildings, House Supply, and Arts.

FOR BUILDINGS. Balconies of the most costly and elaborate patterns, to the simplest and cheapest. Columns, pillars, door frames, patent hinges, self-acting slammers, veranda, awnings, street lamps, hall do., drawing-room do., bedroom do., do. on superlatively grand scale, for public parks.

HOUSEHOLD FITTINGS. Economical kitchen ranges, all sizes, and ship-board stoves, 4 to 10 h.p. (Factor Stoves from \$3) upwards.

Washing Machines which save both time and soap. The love in a cottage stove—serving the double purpose of cooking and heating.

FERRUGINOUS ARTS. Fantastic makes of garden seats, railings of the most improved pattern, school benches, flower, professor stands, tables, and fountains for garden or patio. Crosses, sacred emblems, and railings for graves. Sepulchral ornaments, large fountains for public parks, chandeliers for theatres and public or private halls.

Also, winner of the wager of 30,000 FRANGS.

Manufactured only by HERRING and FARREL, 251 & 252 Broadway, corner of Murray-street, New York.

HERRING, FARREL, and SHERMAN, New Orleans.

GRAN DEPOSITO

TIJERAS DE ESQUILAR

Ball, Vigornia, Oveja, Kangaroo.

Hilo de atar Lana, y Piedras Cuadradas

291-CALLE RIVADAVIA-291.

Devesa y Sempé.

TRANSATLANTIC FIRE INSURANCE COMPANY

HAMBURG.

CAPITAL, 1,000,000 PRUSSIAN THALERS.

Insures all kinds of Buildings, Merchandise, and other Property against Loss or Damage by Fire, at a Moderate Premium.

MANTELS & PFEIFFER,

Calle Chacabuco, Nos. 19 and 21.

THE COLONIA DOCK

THIS "DOCK" IS IN FINE WORKING ORDER.

Vessels hauled in 25 minutes.

RUBIO & FOLEY,

40 CALLE CANGALLO-40

AL BUEN JARDINERO.



78-CALLE CHACABUCCO-78

STORE-HOUSE OF SEEDS OF ALL KINDS.

BY WHOLESALE AND RETAIL.

SEEDS OF AUSTRALIAN, EUCLYPTUS.

SEEDS OF AUSTRALIAN, EUCLYPTUS. SEEDS OF AUSTRALIAN, EUCLYPTUS. SEEDS OF AUSTRALIAN, EUCLYPTUS.

HEADS AND ROOTS OF BULBOUS PLANTS, such as—Hyacinth, Dahlia, Crocus, Pancratium, Eucnemis, Daffodilly, Amaryllis, Muscari, Violsucius, Amorphophallus, Rivieri, Gladiolus, Anemone, Renoncule, Marimonia, Iris, &c.

10,000 WINE PLANTS, great variety, suitable for Wine.

FRUIT TREES. FOREST TREES.

Ornamental Shrubs and Trees. Special Implements for Gardening use. Mr. L'Honnore Letort's Tree for Grafting and Circumcising injured Plants.

The Establishment has a Nursery for Proving the Seeds and Depositing the Plants.

TERMS—CASH.

GUSTAVUS HAMONET, 78 CHACABUCCO.

Chicago!

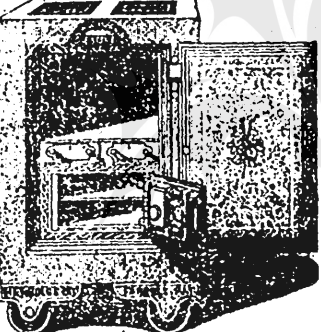
HERRING'S SAFES

One Hundred and Fifty-two Firms have testified to the preservation of their Books, Papers, and Valuables, in the terrible CHICAGO FIRE.

HERRING'S PATENT CHAMPION FIRE & BURGLAR PROOF SAFE



Awarded the Prize Medals at the World's Fair in London. At the Exhibition Universelle in Paris, and at The World's Fair in New York.



Also, winner of the wager of 30,000 FRANGS.



Awarded at the Paris Exhibition the BEST SAFE IN THE WORLD.

HERRING'S NEW PATENT CHAMPION BANKERS' SAFES.

Patent high and low steel-welded, combined with Patent Fire-Proof, Proof against the blow-pipe, as well as the drill. With Patenting T-nut and Grooved Door and Patent Rubber-plated Flange Proof against wedges, nitro-glycerine, and gunpowder.

Manufactured only by HERRING and FARREL, 251 & 252 Broadway, corner of Murray-street, New York.

HERRING, FARREL, and SHERMAN, New Orleans.

FAMILY GROCERY STORE.

60-Calle San Martin-60

Carmen de Areco.

IN THIS Flourishing Camp Town, the centre of rural life, the home of pastoral magnificence, the flower garden of bucolic prosperity, here where Health, Peace and Happiness may be said to have taken up their headquarters.

GENERAL CAMP STORE, where sheep-shears, twine, tea, coffee, &c., are retailed at the LOWEST PRICES.

ENGLISH and GERMAN SAILMAKER.

DANIEL PETERS, 19-Calle Cangallo-19

Athletic Sports

THE SPRING MEETING WILL BE HELD AT PALERMO Saturday, Nov. 1st, 1873

The following is the programme subject to alterations:

- High Jump Standing High Jump Running Long Jump Running Hop Skip and Jump Throwing the Cricket Ball Throwing the Hammer Putting the Shot Pole Leaping Vaulting Hurdle Race 120 yds, 10 flights 3 fete

Entries can be made at Messrs. Mackern, No. 44 Calle San Martin, up to 7 o'clock p.m. on 26th October.

Competitors are requested to make themselves acquainted with the rules and by laws of the Society.

ELECTRO-PLATED WARE

ARTICLES OF THE BEST MANUFACTURE.

Elkington, Cristofle, &c.

- Tea & Coffee Services, Fruit-plates, Dish Covers, Knives, Forks, Spoons, Pickle Stands, Egg Stands, Liquor-frames, Soap Tureens, Platters, Dish Covers, Knives, Forks, Spoons, Pickle Stands, Egg Stands, Knife-sets, &c. &c.

Now landing, ex "Rosario," EMBROIDERED CLOTH TABLE-CLOTHS, in Green and Scarlet. Velvet Pile Table-cloth.

BRUSHES, Hair, Cloth-Hat, Tooth, and Nail-brushes.

DOUBLE TOILETTE SETS, In Porcelain, with Foot-bath and dirty water receiver. In first quality. An assortment of Single Sets, all qualities.

A few pairs of Steel Quills and Indian Clubs.

BRIAR PIPES, MERSCHAUM PIPES, A beautiful assortment.

Ivory and Bone Chessmen.

Sand-spoons and Forks, Mustard-spoons, Salt ditto.

Thick Oak and other Sticks.

PAPER-MACHE TRAYS, IN SETS OF THREE, WORTHY OF ATTENTION.

EX-BONITA.

English Portm. suits, Coat-cases and Bags, fitted and unfitted.

AN ASSORTMENT NEVER YET SEEN IN BUENOS AYRES IN THE SOUTH OF THE LINE.

ON VIEW NEXT WEEK.

ENGLISH BAZAAR, 61-FLORIDA-61

AMERICAN FURNITURE DEPOT 103-CANGALLO-103

H. JOSEPH.

Carmen de Areco.

IN THIS Flourishing Camp Town, the centre of rural life, the home of pastoral magnificence, the flower garden of bucolic prosperity, here where Health, Peace and Happiness may be said to have taken up their headquarters.

GENERAL CAMP STORE, where sheep-shears, twine, tea, coffee, &c., are retailed at the LOWEST PRICES.

ENGLISH and GERMAN SAILMAKER.

DANIEL PETERS, 19-Calle Cangallo-19

C R

Carlos Ristorini

LAND AUCTION

August 30th, 1873

AT LOMAS DE ZAMORRA

22 BLOCKS

IN THE HIGHEST PART OF THE TOWN

ONLY FIVE SQUARES' FROM THE CHURCH

HALF CASH

IN BLOCKS

HALF BLOCKS

QUARTER BLOCKS

SUIT PURCHASERS

Free Train and Lunch

There will be a GRAND MARQUEE on the ground.

SPECIAL TRAIN

on the 30th, SATURDAY,

From CALLE LIMA or the SOUTH PLAZA.

The Lands are known as GRIGERA'S

Surrounded by Gardens and Country-Houses.

THE SOUTHERN LINE

Is going to put down Double Rails very soon.

A TRAMWAY TO LOMAS

Is also on the "tapis."

FOR TITLES & C.

C. RISTORINI, 116, VICTORIA.

EL SABADO, 30 de Agosto (Dia de Fiesta), a las 11 y 10 saldrá de la Estacion del Ferrocarril del Sur, Plaza Constitucion.

Por Boleros de tren y de 2 trayectos ocurrido el Escribano Calle Victoria 116, en la Estacion Plaza Constitucion un cuarto de hora antes de salir al tren.

Entrega de Terrenos EN BERAZATEGUI.

PROPIEDAD DE F. W. DAVIS.

Estando ya mensurados y amojonados, los 1-tes vendidos, la entrega de ellos tendrá lugar en los dias DOMINGO, 31 de AGOSTO,

LUNES 1, y MARTES 2, MIERCOLES 3, de SETIEMBRE.

Pasado este termino, se consideraran entregados los terrenos, aunque no hayan ido sus dueños a recibirlos, y no habrá lugar a reclamo de ningun especie.

El terreno de la Estacion Central el Domingo a las 7.50 de la mañana y a las 2.30 de la tarde, y el Lunes, Martes y Miercoles a las 7.50 de la mañana.

NEW Photographic Establishment FROM VIENNA.

Proprietors SCHIER & LEITNER.

Cangallo corner of Suipacha

Entrance No. 69 in the latter Street.

We beg to advise the respectable Public on this City that we have opened an Establishment of the nature referred to in which Portraits are beautifully got up, painted, and delivered in first rate style.

In the above Establishment and at the extensive premises of Messrs. Fuson, Brothers and Marzoff, an extensive collection of the Photographs of the Advertisers may be seen and examined.

Particular attention is called to the various important personages, and other historical relics, which can be seen and appreciated amongst which are some of Sacred Record, which have been taken from Nature during our stay in Egypt and Arabia.

Entire collections of the Photographs referred to are on sale, or any special one can be obtained singly.

As no other Establishment of this kind can offer similar facilities for the acquisition of every article of the nature referred to it is particularly recommended to the elite of Buenos Ayres.

OBSERVE!

59-Calle Suypacha-59.

Open every day in the week (to the weather fair or foul), a cloudy or rainy day, being no obstacle in the least, from 9 A.M. to 4 P.M.

German, French, English, Italian, and Russian spoken

Schier and Leitner, PHOTOGRAPHERS.

Decorated by the Emperor of Austria.

Coke and Coal Tar.

FOR SALE AT THE Works of the Argentine Gas Company, ALMAGRO.

Orders to be sent to the Administration, Calle Rivadavia, No. 300.

LADY'S SADDLE HORSE FOR SALE.

A Handsome Bright Bay Horse, perfectly quiet for a lady to ride, and believed to be sound; has also been driven in single and double harness. Price, 2,000 m/c. Can be seen and tried on application at the Manager's office, Great Southern Railway, Plaza Constitucion.

FOR SALE.

THE Fast English Clipper Brig JIBARO, 125 Tons Registered, coppered and copper fastened, draws six feet of water, with 40 tons ballast on board, particularly well suited for the Brazil trade. Has a complete new set of sails and rigging, and is ready for sea.

Apply to SAMUEL B. HALE & CO., 24 Reconquista 24

FOR SALE.

THE East English Clipper Brig JIBARO, 125 Tons Registered, coppered and copper fastened, draws six feet of water, with 40 tons ballast on board, particularly well suited for the Brazil trade. Has a complete new set of sails and rigging, and is ready for sea.

Apply to SAMUEL B. HALE & CO., 24 Reconquista 24

FOR SALE.

THE East English Clipper Brig JIBARO, 125 Tons Registered, coppered and copper fastened, draws six feet of water, with 40 tons ballast on board, particularly well suited for the Brazil trade. Has a complete new set of sails and rigging, and is ready for sea.

Apply to SAMUEL B. HALE & CO., 24 Reconquista 24

AUCTION

BY A. Bullrich & Co.

THE FINE Household furniture AND CARRIAGES OF H. ST. J. WILEMAN, Esq. (Quinta de Whitfield) Calle Larga Recoleta On Thursday 23th, At Noon

DRAWINGROOM—Walnut and grey roan and sofa, 2 chairs (arm) 5 chairs, English piano, curtains, carpets, etc.

DININGROOM—Walnut, sideboard, round table, dining do., side table, sofa, carpets, porcelain and crystal set.

DORMITORIES—Bed, toilette table, pier-glasses, laboratories.

TWO OTHER ROOMS—Beds, carpets, etc.

KITCHEN—Copper board table, etc.

STABLES—2 magnificent English made carriages.

And at the same time THE COLLECTION OF Choice Oil Paintings, BY ENGLISH MASTERS, AND High Art Chromotypes.

Oil Paintings.

1. Scene on Lago di Garda, Verina.

2. Scene on Lago di Garda, Verina.

3. Ruins near Rome, P. Minini.

4. The Laird's Com. amon., Redfern.

5. Spanish Bullfight, White, Solomon.

6. Fruit and Pom., White, Solomon.

7. The Light of the Haron J. Paton, A.R.H.

8. Landscape (Scottish), W. Shayer.

9. Sheep in landscape, E. Deveries.

10. Isle of Olypus, J.M. Turner, R.A.

Chromotypes.

11. Catanzara, Alter Richardson

12. Boon Lomond, Penley

13. Loch Tarbert, Rowbotham.

14. C. D. Donkerque, Hebrt.

15. Summer, Sydney Cooper.

17. Thoughts of Home, G. Deveries.

18. Ulysses and Polyphemus, J.M. Turner, R.A.

19. Como, Rowbotham

20. Bellagio, Rowbotham.

21. Glacier de Friento, Elijah Walton.

22. Point de Sall, (near Sest), Do.

23. Mont Blanc, Do.

24. Bochna and Tarnow, J.M. Turner, R.A.

25. Ischia, Alter Richardson.

26. Isla d'Oria, B. Kelt Porter.

27. Temple of Knossos, Peter David Roberts.

28. Convect of St. Kath. in, Do.

29. Entrance to the Tombs of Kings, Do.

30. Doric Temple, Do.

31. Muley Nadob Nubia, Do.

32. Ashdod, Do.

The Collection may be viewed privately the two days preceding the Sale.

Cards to view may be obtained from the Auctioneer, Potoni 76.

REMATE

FOR Pedro Ebbeke y Cia.

Importante Remate JUDICIAL

Del hermoso edificio Coliseum

Situado in la calle PARQUE entre

ESMERALDA y SUYPACHA

Por liquidacion de la Sociedad

Estacion \$ 2,137,500 m/c.

Las 2/3 partes \$ 1,425,000 m/c.

Condiciones de la venta: una quinta parte al contado y el resto en cuatro plazos de 3 meses quedando en garantia el mismo edificio.

El Jueves 28 de Agosto

A las 7 de la noche

Venderemos por orden del Señor Juez de Comercio Dr. Du Juan E. Barra, el magnifico edificio arriba mencionado, edificado en terreno de 15 metros 27 centimetros igual a 17 varas 75 centimos de frente al norte por 61 metros 26 centimetros igual a 70 varas 75 centimos de fondo al sur.

El edificio ha sido taxado en dos millones ciento treinta y siete mil quinientos ochenta y cinco pesos, siendo la base para la venta las dos terceras partes de la taxacion ciento noventa y cinco mil quinientos ochenta y cinco pesos, restando el resto de la taxacion para recomendar este hermoso edificio, construido de los mejores materiales, situado en la parte más central de la ciudad, y conocido por todo el mundo.

Enseguida y por cuenta de la misma sociedad vendemos al contado lo siguiente:

40 decenas mas o menos de sillones con asiento exterior, 3 lavatorios grandes de coaba con piedra marmol y espejo, 1 mesa de coaba con 10 sillas marmol, 1 mesa de coaba con 10 sillas marmol, 12 mesas de pino como para banquetes, 1 mesa de pino con cojones, 1 armario de pino, 1 estante para masas de pan, perchas para colgar ropa, 1 estante grande con diez cajones para bombas, un gran estable para orquesta, 14 magnificos brazos de cristal por gas de tres lucos con sus bombas correspondientes, 5 brazos dobles de gas con bombas, 17 pucos de gas de varias clases a la mayor parte con bombas, 5 farolitos de gas, varas caleras sencillas y dobles, y un magnifico cocina economica para un gran hotel.

Los interesados pueden pasar a inspeccionar el edificio el dia Domingo 24 del cor. a cualquier hora del dia.

Apply to 266 Im jyj27

REMATE

FOR Pedro Ebbeke & Co.

UNA CASA

Situada en la Calle de Esmeralda, No 178, Entre las Calles Corrientes y Parque.