

The office of this bank having been removed to the above specified building in order to suit the increasing business, the public is informed that the following transactions are carried on in currency and specie in this bank: First, in current business, with credit signatures are accepted as usual and terms of other securities approved by the Manager.

MAUA BANK, 101-103 CALLE CANGALLO

INTEREST FOR CURRENT MONTHS IN ACCOUNT CURRENTS, SAVING, FOR BALANCES IN SAVINGS BANKS, IN ACCOUNTS FOR RENT, TAXES, MONEY FOR DEPOSITS IN SAVINGS BANKS, etc.

MAUA BANK, 101-103 CALLE CANGALLO

REDUCTION OF FARES. The Royal Mail Steam Packet Co., Ltd. will transfer to the "Araucario" and will transfer to the "Araucario" one of the Company's Transatlantic Boats, Passengers and Freight for the following Ports, viz.: Bahia, Pernambuco, St. Vincent (Cape de Verd Islands), Lisbon, and Southampton.

ROYAL MAIL STEAM PACKET CO., LTD.

Will leave this Port for Montevideo and Rio de Janeiro, on 27th August. At Rio de Janeiro the "Araucario" will meet with and will transfer to the "Araucario" one of the Company's Transatlantic Boats, Passengers and Freight for the following Ports, viz.: Bahia, Pernambuco, St. Vincent (Cape de Verd Islands), Lisbon, and Southampton.

ROYAL MAIL STEAM PACKET CO., LTD.

REDUCTION OF FARES. The Royal Mail Steam Packet Co., Ltd. will transfer to the "Araucario" and will transfer to the "Araucario" one of the Company's Transatlantic Boats, Passengers and Freight for the following Ports, viz.: Bahia, Pernambuco, St. Vincent (Cape de Verd Islands), Lisbon, and Southampton.

ROYAL MAIL STEAM PACKET CO., LTD.

REDUCTION OF FARES. The Royal Mail Steam Packet Co., Ltd. will transfer to the "Araucario" and will transfer to the "Araucario" one of the Company's Transatlantic Boats, Passengers and Freight for the following Ports, viz.: Bahia, Pernambuco, St. Vincent (Cape de Verd Islands), Lisbon, and Southampton.

ROYAL MAIL STEAM PACKET CO., LTD.

REDUCTION OF FARES. The Royal Mail Steam Packet Co., Ltd. will transfer to the "Araucario" and will transfer to the "Araucario" one of the Company's Transatlantic Boats, Passengers and Freight for the following Ports, viz.: Bahia, Pernambuco, St. Vincent (Cape de Verd Islands), Lisbon, and Southampton.

THE AND RIVER PLATE NEWS.

THE AND RIVER PLATE NEWS.

THE AND RIVER PLATE NEWS.

THE AND RIVER PLATE NEWS.

THE AND RIVER PLATE NEWS.

THE AND RIVER PLATE NEWS.

THE AND RIVER PLATE NEWS.

THE AND RIVER PLATE NEWS.

THE AND RIVER PLATE NEWS.

THE AND RIVER PLATE NEWS.

THE AND RIVER PLATE NEWS.

THE AND RIVER PLATE NEWS.

THE AND RIVER PLATE BANK (LIMITED).

Authorized Capital £2,000,000 sterling. Reserve Fund Jan. 1889, £1,500,000 do. Current accounts opened with interest properly introduced and interest allowed on credit balances.

THE AND RIVER PLATE BANK (LIMITED).

On deposits in both currencies (made) 3 per cent. current interest. On deposits in both currencies (made) 3 per cent. current interest.

THE AND RIVER PLATE BANK (LIMITED).

On deposits in both currencies (made) 3 per cent. current interest. On deposits in both currencies (made) 3 per cent. current interest.

THE AND RIVER PLATE BANK (LIMITED).

On deposits in both currencies (made) 3 per cent. current interest. On deposits in both currencies (made) 3 per cent. current interest.

THE AND RIVER PLATE BANK (LIMITED).

On deposits in both currencies (made) 3 per cent. current interest. On deposits in both currencies (made) 3 per cent. current interest.

THE AND RIVER PLATE BANK (LIMITED).

On deposits in both currencies (made) 3 per cent. current interest. On deposits in both currencies (made) 3 per cent. current interest.

THE AND RIVER PLATE BANK (LIMITED).

On deposits in both currencies (made) 3 per cent. current interest. On deposits in both currencies (made) 3 per cent. current interest.

THE AND RIVER PLATE BANK (LIMITED).

On deposits in both currencies (made) 3 per cent. current interest. On deposits in both currencies (made) 3 per cent. current interest.

THE AND RIVER PLATE BANK (LIMITED).

On deposits in both currencies (made) 3 per cent. current interest. On deposits in both currencies (made) 3 per cent. current interest.

THE AND RIVER PLATE BANK (LIMITED).

Authorized Capital £2,000,000 sterling. Reserve Fund Jan. 1889, £1,500,000 do. Current accounts opened with interest properly introduced and interest allowed on credit balances.

THE AND RIVER PLATE BANK (LIMITED).

On deposits in both currencies (made) 3 per cent. current interest. On deposits in both currencies (made) 3 per cent. current interest.

THE AND RIVER PLATE BANK (LIMITED).

On deposits in both currencies (made) 3 per cent. current interest. On deposits in both currencies (made) 3 per cent. current interest.

THE AND RIVER PLATE BANK (LIMITED).

On deposits in both currencies (made) 3 per cent. current interest. On deposits in both currencies (made) 3 per cent. current interest.

THE AND RIVER PLATE BANK (LIMITED).

On deposits in both currencies (made) 3 per cent. current interest. On deposits in both currencies (made) 3 per cent. current interest.

THE AND RIVER PLATE BANK (LIMITED).

On deposits in both currencies (made) 3 per cent. current interest. On deposits in both currencies (made) 3 per cent. current interest.

THE AND RIVER PLATE BANK (LIMITED).

On deposits in both currencies (made) 3 per cent. current interest. On deposits in both currencies (made) 3 per cent. current interest.

THE AND RIVER PLATE BANK (LIMITED).

On deposits in both currencies (made) 3 per cent. current interest. On deposits in both currencies (made) 3 per cent. current interest.

THE AND RIVER PLATE BANK (LIMITED).

On deposits in both currencies (made) 3 per cent. current interest. On deposits in both currencies (made) 3 per cent. current interest.

WANKLYN & CO., 108-CALLE SAN MARTIN-108

From 31st March, until further Notice, the rates of interest allowed and charged will be as follows: Allowed in account current, 5% per an.

WANKLYN & CO., 108-CALLE SAN MARTIN-108

From 31st March, until further Notice, the rates of interest allowed and charged will be as follows: Allowed in account current, 5% per an.

WANKLYN & CO., 108-CALLE SAN MARTIN-108

From 31st March, until further Notice, the rates of interest allowed and charged will be as follows: Allowed in account current, 5% per an.

WANKLYN & CO., 108-CALLE SAN MARTIN-108

From 31st March, until further Notice, the rates of interest allowed and charged will be as follows: Allowed in account current, 5% per an.

WANKLYN & CO., 108-CALLE SAN MARTIN-108

From 31st March, until further Notice, the rates of interest allowed and charged will be as follows: Allowed in account current, 5% per an.

WANKLYN & CO., 108-CALLE SAN MARTIN-108

From 31st March, until further Notice, the rates of interest allowed and charged will be as follows: Allowed in account current, 5% per an.

WANKLYN & CO., 108-CALLE SAN MARTIN-108

From 31st March, until further Notice, the rates of interest allowed and charged will be as follows: Allowed in account current, 5% per an.

WANKLYN & CO., 108-CALLE SAN MARTIN-108

From 31st March, until further Notice, the rates of interest allowed and charged will be as follows: Allowed in account current, 5% per an.

WANKLYN & CO., 108-CALLE SAN MARTIN-108

From 31st March, until further Notice, the rates of interest allowed and charged will be as follows: Allowed in account current, 5% per an.

CREDITO MOBILIARIO DEL RIO DE LA PLATA EN BUENOS AYRES.

Offices: CALLE PIEDRA 118 (Altos). Director-General: Don Juan Blanco del Valle. Sub-Director: Don Antonio Lopez.

CREDITO MOBILIARIO DEL RIO DE LA PLATA EN BUENOS AYRES.

Offices: CALLE PIEDRA 118 (Altos). Director-General: Don Juan Blanco del Valle. Sub-Director: Don Antonio Lopez.

CREDITO MOBILIARIO DEL RIO DE LA PLATA EN BUENOS AYRES.

Offices: CALLE PIEDRA 118 (Altos). Director-General: Don Juan Blanco del Valle. Sub-Director: Don Antonio Lopez.

CREDITO MOBILIARIO DEL RIO DE LA PLATA EN BUENOS AYRES.

Offices: CALLE PIEDRA 118 (Altos). Director-General: Don Juan Blanco del Valle. Sub-Director: Don Antonio Lopez.

CREDITO MOBILIARIO DEL RIO DE LA PLATA EN BUENOS AYRES.

Offices: CALLE PIEDRA 118 (Altos). Director-General: Don Juan Blanco del Valle. Sub-Director: Don Antonio Lopez.

CREDITO MOBILIARIO DEL RIO DE LA PLATA EN BUENOS AYRES.

Offices: CALLE PIEDRA 118 (Altos). Director-General: Don Juan Blanco del Valle. Sub-Director: Don Antonio Lopez.

CREDITO MOBILIARIO DEL RIO DE LA PLATA EN BUENOS AYRES.

Offices: CALLE PIEDRA 118 (Altos). Director-General: Don Juan Blanco del Valle. Sub-Director: Don Antonio Lopez.

CREDITO MOBILIARIO DEL RIO DE LA PLATA EN BUENOS AYRES.

Offices: CALLE PIEDRA 118 (Altos). Director-General: Don Juan Blanco del Valle. Sub-Director: Don Antonio Lopez.

CREDITO MOBILIARIO DEL RIO DE LA PLATA EN BUENOS AYRES.

Offices: CALLE PIEDRA 118 (Altos). Director-General: Don Juan Blanco del Valle. Sub-Director: Don Antonio Lopez.

GREASE PURE AND REFINED.

For Cooking Extracted from the Meat. By A. BENTINIS & CO. New and Improved Mechanical System. This Extract is superior to Lard, although re-tailed at the same price.

LIEBIG EXTRACT OF MEAT

Prepared by A. BENTINIS & CO. This matchless preparation for the sick or infirm, young or old, may be had like all other modern medical uses, in all the best Apothecaries in town.

LIEBIG EXTRACT OF MEAT

Prepared by A. BENTINIS & CO. This matchless preparation for the sick or infirm, young or old, may be had like all other modern medical uses, in all the best Apothecaries in town.

LIEBIG EXTRACT OF MEAT

Prepared by A. BENTINIS & CO. This matchless preparation for the sick or infirm, young or old, may be had like all other modern medical uses, in all the best Apothecaries in town.

LIEBIG EXTRACT OF MEAT

Prepared by A. BENTINIS & CO. This matchless preparation for the sick or infirm, young or old, may be had like all other modern medical uses, in all the best Apothecaries in town.

LIEBIG EXTRACT OF MEAT

Prepared by A. BENTINIS & CO. This matchless preparation for the sick or infirm, young or old, may be had like all other modern medical uses, in all the best Apothecaries in town.

LIEBIG EXTRACT OF MEAT

Prepared by A. BENTINIS & CO. This matchless preparation for the sick or infirm, young or old, may be had like all other modern medical uses, in all the best Apothecaries in town.

LIEBIG EXTRACT OF MEAT

Prepared by A. BENTINIS & CO. This matchless preparation for the sick or infirm, young or old, may be had like all other modern medical uses, in all the best Apothecaries in town.

LIEBIG EXTRACT OF MEAT

Prepared by A. BENTINIS & CO. This matchless preparation for the sick or infirm, young or old, may be had like all other modern medical uses, in all the best Apothecaries in town.

RIVER PLATE HANDBOOK.

GEORGE-STREET, 30 CORNHILL, LONDON.

SECTION A. (200 PAGES.) I. The River Plate Republics, general outline. II. The Argentine Republic, its provinces and chief towns. III. Foreign population, according to nationalities.

SECTION B. (180 PAGES.) I. The City of Buenos Aires. II. Hotels, Clubs, Theatres, Plazas, Courts, Museums, and Schools.

SECTION C. (200 PAGES.) I. The Province of Buenos Aires—general outline. II. Life in the Camp—Cattle-farming, Sheep-farming.

SECTION D. (200 PAGES.) I. The Province of Buenos Aires—general outline. II. Life in the Camp—Cattle-farming, Sheep-farming.

SECTION E. (200 PAGES.) I. The Province of Buenos Aires—general outline. II. Life in the Camp—Cattle-farming, Sheep-farming.

SECTION F. (200 PAGES.) I. The Province of Buenos Aires—general outline. II. Life in the Camp—Cattle-farming, Sheep-farming.

SECTION G. (200 PAGES.) I. The Province of Buenos Aires—general outline. II. Life in the Camp—Cattle-farming, Sheep-farming.

SECTION H. (200 PAGES.) I. The Province of Buenos Aires—general outline. II. Life in the Camp—Cattle-farming, Sheep-farming.

SECTION I. (200 PAGES.) I. The Province of Buenos Aires—general outline. II. Life in the Camp—Cattle-farming, Sheep-farming.





SAVINGS BANK BANK MAUA AND Co.

01-Cangallo-103 BUENOS AYRES.

The immense advantages of Accounts Current are now so generally appreciated in the two great emporiums of the River Plate...

opened a Savings Bank at No 103 Calle Cangallo from nine a.m. till three p.m. every day...

CONDITIONS

First—The Bank receives at interest any sum from Twenty-five Dollars currency or one Sixty Dollar upwards.

Second—The interest allowed is six per cent (6%) per annum, which is liquidated every six months.

LONDON, BRAZIL, BELGIUM, AND RIVER PLATE

ROYAL MAIL STEAMSHIP COMPANY, (LIMITED)

CITY OF LIMERICK, CITY OF RIO JANEIRO, CITY OF BUENOS AYRES, CITY OF BRUSSELS.

This Company, having concluded a Contract with the Belgian Government, for the term of Ten years, commencing 1st March 1888...

The CITY OF BRUSSELS is the next Steamer expected. All LEFTS must be taken up to the Post-office.

WHEELS FOR ONE, TWO, AND THREE HORSES. FORK, HOE, PICK, AND AXE HANDLES. HAND AND POWER CORN-SHELLER.

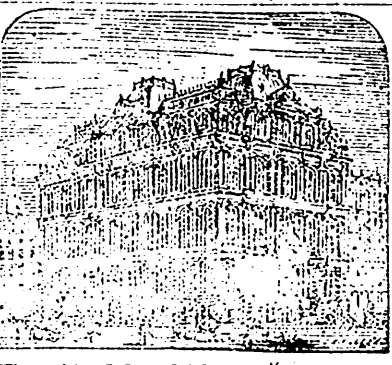
T. B. Coffin, Son, & Co., 83 to 87 Calle Esmeralda, BUENOS AYRES. WAREHOUSE MACHINERY AND AGRICULTURAL IMPLEMENTS.

AMERICAN PLATFORM SCALES. SHOVELS. SPADES. PICKS. AXES. SCYTHES. HAMMERS. HATCHETS. UNION WASHING MACHINES.

AGRICULTURAL MACHINERY. Manufactured by RANSOMES, SIMS, & HEAD, ORWELL WORKS, IPSWICH.

George Suarez and Co., Agents and Representative throughout the Argentine Republic, of Messrs. Ransomes, Sims, and Head, of Ipswich, England...

REMOVAL. GALBRAITH & HUNTER HAVE NOW OPENED THEIR NEW AND EXTENSIVE PREMISES, No. 55, CALLE DEFENSA.



Equitable Life Assurance Society.

No. 92 BROADWAY, NEW YORK. Sum Assured during the Fiscal Year, terminating January 31, 1888, \$47,020,134.

INCOME—\$4,500,000. CASH ASSETS—\$7,600,000. PURELY MUTUAL—All Profits annually divided among Policy Holders.

President—WILLIAM C. ALEXANDER, Actuary—GEORGE W. PHILLIPS, Vice-President—HENRY B. HYDE.

Local Board in Buenos Ayres: Srs. SAMUEL B. HALE, Dr. MANUEL J. GEBERICO, Sr. AMERIGO J. L. LIZCA, Sr. JOSE ARISTOZABAL.

It being highly important to Farmers, to grow as many different kinds as possible, the Horse-cum, Haba gruesa (Vicia Faba) can be justly recommended.

The price of the best cleaned Seed is \$200 per mc per fanega, weighing 240 lbs. Samples can be seen at Messrs. Cavallero, Brothers, Calle Defensa, where orders will be received; or also to all who wish to avail themselves of their use, at \$200 yearly.

English Books & Stationery. Large and well-assorted Stock of English Books, comprising Histories, Travels, Advertisers, Law Books, Medical Works, Agriculture, Gardening, News, and a large variety of Standard Works; also Stationery, Bindings, suitable for Schools, Students, and all other classes, forwarded with an assortment of Stationery, which will be considerably enlarged.

THE LONDON ASSURANCE. INCORPORATED BY ROYAL CHARTER. FOR INSURING BUILDINGS, GOODS, AND MERCHANDISE AGAINST LOSS OR DAMAGE BY FIRE.

SEWING MACHINES. A large and varied assortment on hand. Warranted to work well. They are all of the latest and best inventions, and of different prices.

THE LONDON ASSURANCE. INCORPORATED BY ROYAL CHARTER. FOR INSURING BUILDINGS, GOODS, AND MERCHANDISE AGAINST LOSS OR DAMAGE BY FIRE.

SEAMAN'S MISSION. Free Reading Room open daily. Religious Services every evening. Commencing every Thursday. Temperance Meeting every Saturday, at 7.30. Seamen and their friends cordially invited.

ALLIANCE BRITISH AND FOREIGN LIFE AND FIRE ASSURANCE COMPANY. BARTHOLOMEW LANE, LONDON. CAPITAL FIVE MILLIONS STERLING.

James Alexander, Esq. (Alexander, Fletcher, & Co.) President. Charles George Barnett, Esq. (Barnett, Hoares, Hambury, & Lloyd) Vice-President.

It will be found that all these are presented by this Company to the Public in an eminent degree. The Company's large Capital, under the immediate management of the Directors of this Establishment, affords perfect security to the Assured.

ST. BRENDA'S COLLEGE, CALLE DE ARCO. GENERAL PROGRAMME. The object of this College is to give a liberal and useful education, based on religious principles.

J. W. TREADWELL, Commission Agent, of GREAT WINCHESTER STREET, LONDON. Undertakes the sale of all kinds of Produce, and with the present season orders for Home Manufactures upon the best terms.

THE IMPERIAL FIRE INSURANCE COMPANY OF LONDON. ESTABLISHED 1803. CAPITAL: £1,000,000 STERLING.

NOTICE TO SHIPPOWERS. The Marine Railway at Colonia, being completed, notice is called to the following: Shipping Vessels and Steamers of over one hundred (100) tons.

THE STEAMBOAT AGENCY OF A. MATTI & PIERA, 361 CALLE CUYO. The Steamers of this Agency will run as follows: ROSARIO AND INTERMEDIATE PORTS.

NOTICE. The undersigned (who superintended the building of the first water-works in Buenos Ayres), is open to undertake the management of the building of Moles, Bridges, or any other class of Public Works.

WEESTRN RAILWAY. WINTER TIME TABLE.

Table with columns for Stations (Rosario, Cordoba, Bahia, etc.) and times for various train services.

The Central Argentine Railway. On and after the 2nd of August 1889, the Trains will run as follows: From Rosario at 8 A.M.

Table showing train schedules for Rosario, Cordoba, Bahia, and other stations.

LA S. D. I. G. N. C. I. S. Comercio de los Pueblos, Paro de Brazado, 9 de Julio, y Longeana. Agencias—Calle Tucuman, No. 26, y Victoria.

ATHLETIC SPORTS. THE SPRING MEETING. Will take place on Monday, 1st of November 1889.

STEAMBOAT AGENCY OF A. MATTI & PIERA, 361 CALLE CUYO. The Steamers of this Agency will run as follows: ROSARIO AND INTERMEDIATE PORTS.

THE STEAMBOAT AGENCY OF A. MATTI & PIERA, 361 CALLE CUYO. The Steamers of this Agency will run as follows: ROSARIO AND INTERMEDIATE PORTS.

NOTICE. The undersigned (who superintended the building of the first water-works in Buenos Ayres), is open to undertake the management of the building of Moles, Bridges, or any other class of Public Works.

GREAT SOUTHERN RAILWAY. From the 23rd Day of MARCH, 1889, the Trains will run as follows:

Table showing train schedules for Buenos Ayres, Rosario, Cordoba, Bahia, and other stations.

On and after the 23rd day of March, 1889, and until further Notice, the Trains will run as under: THE NORTHERN RAILWAY.

Table showing train schedules for Rosario, Cordoba, Bahia, and other stations.

On and after the 23rd day of March, 1889, and until further Notice, the Trains will run as under: THE NORTHERN RAILWAY.

On and after the 23rd day of March, 1889, and until further Notice, the Trains will run as under: THE NORTHERN RAILWAY.

On and after the 23rd day of March, 1889, and until further Notice, the Trains will run as under: THE NORTHERN RAILWAY.

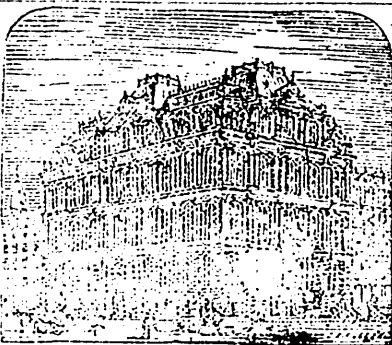
On and after the 23rd day of March, 1889, and until further Notice, the Trains will run as under: THE NORTHERN RAILWAY.

On and after the 23rd day of March, 1889, and until further Notice, the Trains will run as under: THE NORTHERN RAILWAY.

SAVINGS BANK BANK MAUA AND Co. 01-Cangallo-103 BUENOS AYRES.

The immense advantages of Accounts Current are now so generally appreciated in the two great metropolises of the River Plate...

opened a Savings Bank at No 103 Calle Cangallo from since March 1st 1887...



Equitable Life Assurance Society.

No. 92 BROADWAY, NEW YORK Sun Assured during the Fiscal Year, terminating January 31, 1887, \$47,020,124.

ALLIANCE BRITISH AND FOREIGN LIFE AND FIRE ASSURANCE COMPANY... ESTABLISHED MARCH, 1824.

WEESTRN RAILWAY.

Table with columns for stations (Chilpancingo, Amecameca, etc.) and times for various routes.

THE NORTHERN RAILWAY.

Table with columns for stations (Palermo, Rivadavia, etc.) and times for various routes.

GREAT SOUTHERN RAILWAY.

Table with columns for stations (Buenos Ayres, Barracas, etc.) and times for various routes.

CONDITIONS The Bank receives at interest any sum from Twenty-five Dollars currency or one Silver Dollar upwards.

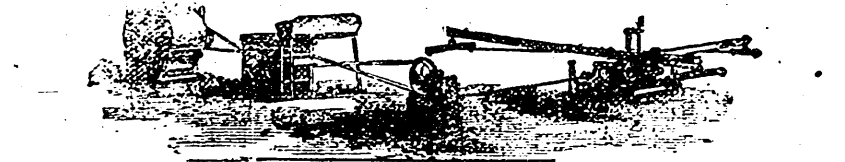
LONDON, BRAZIL, BELGIUM AND RIVER PLATE ROYAL MAIL STEAMSHIP CO. (LIMITED)

This Company, having concluded a Contract with the Belgian Government, commencing 1st March 1887, will dispatch a Steamer with 2 Jacaros, Montevideo, and Buenos Ayres.

- WIFE-BEARS FOR ONE, TWO, AND THREE FORK, HOE, PICK, AND AXE HAND AND POWER CORN-SHELLERS...

T. B. Coffin, Son, & Co., 83 to 87 Calle Esmeralda, BUENOS AYRES. WAREHOUSE MACHINERY AND AGRICULTURAL IMPLEMENTS.

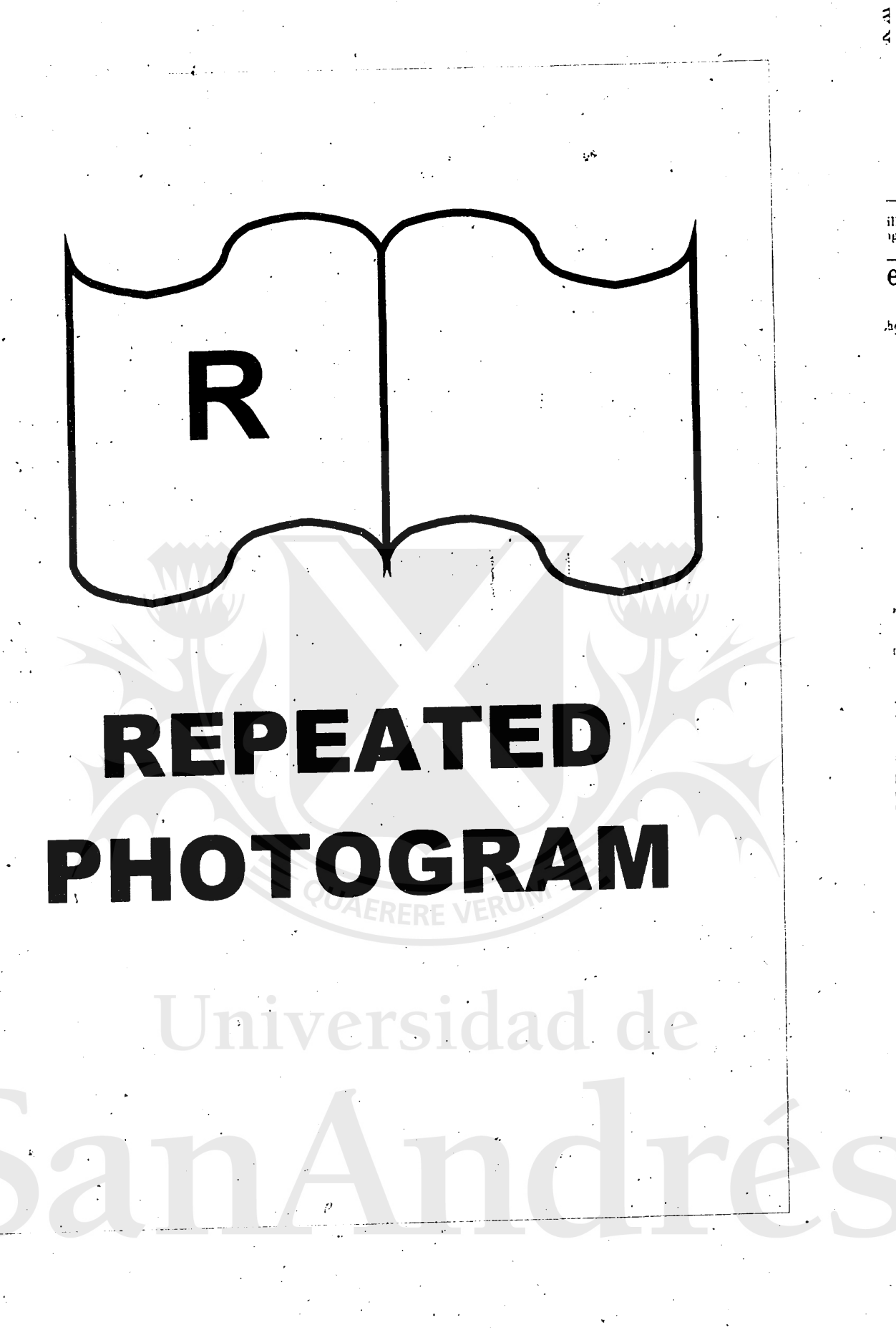
- AMERICAN PLATFORM SCALES. WING SHOVELS. SPADES. PICKS. AXES. SCYTHES. HAMMERS. HATCHETS. PRESSES...



AGRICULTURAL MACHINERY, Manufactured by RANSOMES, SIMS, & HEAD, ORWELL WORKS, IPSWICH.

George Sures and Co., Agents and Representative throughout the Argentine Republic, of Messrs. Ransomes, Sims, and Head, of Ipswich, England.

REMOVAL. GALBRAITH & HUNTER HAVE NOW OPENED THEIR NEW AND EXTENSIVE PREMISES, No. 55, CALLE DEFENSA,



SEWING MACHINES. A large and varied assortment on hand. Wanted to work well. They are all of the latest and best inventions, and of different prices.

THE LONDON ASSURANCE COMPANY INCORPORATED BY ROYAL CHARTER FOR INSURING BUILDINGS, GOODS AND MERCHANTS AGAINST LOSS BY FIRE.

NOTICE TO SHIPOWNERS AND SHIPMASTERS. The Marine Railway at Colonia, being completed, public attention is called to the following particulars:

STEAMROAT AGENCY OF A. MATTI & PIERA, 361 CALLE CUYO. The Steamers of this Agency will run as follows:

NOTICE TO THE GOVERNMENT, OR WHOM IT MAY CONCERN. The undersigned (who superintend the building of the first wooden mole in Buenos Ayres), is open to undertake the management of the building of Moles, Bridges, or any other class of Public Works.

BOCA, Barracas, and Ensenada Railway, Between Venezuela and Barracas Bridge. From and after THURSDAY, July 9, DEPARTURE.

CANADIAN FARM AND TALLOW FACTORY, ESTANCIA DE LAVALLE, SAN VICENTE. This Establishment will commence working on the 1st of August.

SEAMAN'S MISSION 26 CALLE CANGALLO. Free Reading Room open daily. Religious Services every Evening. German Meeting every Thursday. Temperance Meeting every Saturday, at 7.30.

THE NORTHERN RAILWAY.

Table with columns for stations (Palermo, Rivadavia, etc.) and times for various routes.

THE NORTHERN RAILWAY.

Table with columns for stations (Palermo, Rivadavia, etc.) and times for various routes.

GREAT SOUTHERN RAILWAY.

Table with columns for stations (Buenos Ayres, Barracas, etc.) and times for various routes.

BREAKFAST A SUCCESSFUL EXPERIMENT.

The 'Civil Service Gazette' has the following interesting remarks: 'There are very few simple articles of food which can boast so many valuable and important dietary properties as cocoa.'

