

Thompson, F. P. y H., Guamini, El Rosario, do. Lopez C. Inares, Dos Marias, do. ... (List of names and locations)

FINES, DOMINGO. Benitez, Juan, do. La California, do. Barrera, Luis, do. Bella Vista, do. ... (List of names and locations)

to the general loss, because many of them have not had the means, either to gather the crops, or carry out this operation with the necessary rapidity to make it effective.

Thus, a great number of our good and honest colonists have suffered, and will go on suffering, on account of the great number of them also who have set up precedent of conduct which would otherwise be willingly accorded them—and to-day the man who requires to sell all or a part of his standing crops, in order to defray his harvest expenses, will knock in vain at the door of exporters or other commercial firms, who more or less, and in different ways, "have been done before."

Talking of lotteries, I am glad to say that the project of our provincial one, probably the Santa Fé government is satisfied for the present with the proceeds of the National lottery, which it seems, has been finding its way by crooked roads to the old Sleepy Hollow for the last three years, at the rate of a hundred thousand a year.

Coachmen are yet on the strike, with no immediate prospect of a settlement, and the city is quieter than when these worthies drive at full tilt over our paved streets, which are a miniature of the approaches to the heights of the Rocky Mountains.

There is no extraordinary "entusiasmo" to be noticed generally for the approaching carnival festivities, which may or may not be accounted for by a rumour which has been floated in "east," or probably as a joke, to the effect that this festive and mad season will be the time selected for a revolution to break out with the object of knocking Governor Leiva and his set from the heights of power.

The news from outside continue being far from satisfactory in reference to the harvest, the last rains having done further damage to the stacked wheat, and caused delays and sundry other inconveniences to the labours of harvesting.

CHILE AND ARGENTINA. (From the Valparaiso Review.) Events have proved that we were quite right in not attaching too great an importance to the peaceful protestations between Argentina and Chile at the time of Archbishop Casanova's visit to Buenos Ayres.

It was given out that the negotiations would be suspended until the ex-Chilian Minister at Buenos Ayres took over the Foreign Office, but it now appears that the department will not be handed over to him until February. We are at a loss to understand this extraordinary dilatoriness.

Chile on the other hand, has an enormous coast line, with a hundred ports almost completely unfortified, the most important of which are practically inaccessible by land, so that she would lie at the mercy of any power which obtained the control of the sea.

MONTEVIDEAN PORT. ESTIMATES OF COST. No. 1 cent under \$16,000,000, such in round numbers, are the estimates for building the port in Montevideo.

Table with columns for item description and cost in Francs and Or \$.

THE CRUISE OF THE FLEET. The Argentine fleet, comprised of the 9 de Julio, Libertad, 25 de Mayo, Almirante Brown and Patria arrived safely at Port Maderia on the 14th after a pleasant voyage and most instructive cruise.

The squadron weighed anchor next morning at 4 a.m. and continued the voyage in the same order of sailing. In the afternoon the order was changed and the vessels came into one line, increasing the distance between each other to 700 metres.

Feb. 2nd 1896. The beach this morning was crowded with new comers from Buenos Aires, whose fatigued appearance as they walked along the Rambla before breakfast laboured from all new arrivals.

Another instance of this despoetic inspection we see in the accommodation of steers on deck space. The other day a shipper had the wooden fixtures put aboard, according to regulations, room for 130 steers on the top story and reasonably enough room for an equal number on the lower story.

A SKETCH OF GENERAL ROCA. The Boletin Militar of Santiago de Chile publishes a sketch of General Roca as a military man and as a politician.

LOMAS CHORAL SOCIETY. This Society held its first annual general meeting on Wednesday evening, 29th inst., at 8.30 p.m., and we think Lomas an district area to be congratulated on having obtained another "record" for, although the Society as yet barely num-

While I write there is an auction going on of Sr. Gomara's splendid villa. Place cost \$55,000 to build, is now owned by the Bank, and put up at a valuation of \$25,000.

EXPORT OF LIVE STOCK. We call the attention of Minister Romero to the serious complaints of shippers of live-stock, who are so baulged by the intrusion of officialdom that they declare that the live-stock export from Buenos Aires and La Plata must be eventually abandoned.

How fat the absurdity of this red tape inspection of animals is carried may be gathered from the following fact. A shipper had eleven hundred picked sheep, from the other side of the river, ready for shipment: all the animals had been most carefully revised and were in excellent condition.

Another instance of this despoetic inspection we see in the accommodation of steers on deck space. The other day a shipper had the wooden fixtures put aboard, according to regulations, room for 130 steers on the top story and reasonably enough room for an equal number on the lower story.

The Boletin Militar of Santiago de Chile publishes a sketch of General Roca as a military man and as a politician. The leaguer in question does not take an impartial view of General Roca, consequently the sketch of our eminent statesman is a very one-sided affair.

Lomas Choral Society. This Society held its first annual general meeting on Wednesday evening, 29th inst., at 8.30 p.m., and we think Lomas an district area to be congratulated on having obtained another "record" for, although the Society as yet barely num-

Royal Mail Steam Packet Co.

The following are the proposed sailings of this Company's steamers:

NILE
Capt. J. Douglas Spooner
to sail on the 6th Feb.
for Rio, Bahia, Pernambuco, Lisbon, Vigo

Clyde
Capt. F. Messervy
to sail on the 20th Feby.
for Rio Bahia, Pernambuco, Lisbon, Vigo

DIRECT SERVICE
Special voyage of the R.M.S.
MAGDALENA

Proposed to sail
FOR EUROPE DIRECT
On the 14th May 1896

Particular attention is drawn to this voyage as arrangements have been made to guarantee passengers a MOST RAPID and COMFORTABLE trip home.

For further particulars apply to
HENRY L. GREEN
Reconquista 412

Without calling at any Brazilian Port.

NORTON LINE
Managers
BUCKNALL NEPHEWS, LONDON, Agents

The following full powered steamers will be despatched:
New York from Buenos Aires Montevideo and Rosario.

For all information, rates of freight and passage from New York etc apply to the Agents.

WILLIAMS & Co.
287-CALLE 25 DE MAYO-287
at ad. Montevideo Correo 122, or to Norton and Son, 90 Wall St., New York; Bucknall Nephews, 22 Rutland St., London, E. C.

"PRINCE" LINE.
The Steamer
"IMPERIAL PRINCE"
CAPTAIN W. JAMESON
Will sail on or about
February 6th
FOR LONDON.

The Steamer
"KAFFIR PRINCE"
CAPTAIN G. OLDITCH
Will sail on or about
February 20th
FOR SANTOS AND RIO.

Each steamer takes cargo and a limited number of passengers for these ports.
Also the Steamer
"tartar prince"
CAPTAIN J. HESKETH
Will sail on or about
MARCH 7th, 1896
FOR LONDON AND ANTWERP.

Calling at Southampton with passengers if sufficient inducement offers, whence they are forwarded to London by special corridor train at the Company's expense.

This steamer is lighted throughout with electricity and has every modern convenience for the comfort of first class passengers. High class cuisine. A doctor and stewardess carried.

For freight and passage apply to
JAMES KNOTT
Reconquista 36

North German Lloyd
The following new and rapid steamers with splendid saloon accommodations will sail from the Puerto Madero direct for:
Vigo, Southampton, Antwerp & Bremen VIA LAS PALMAS

Feb. 19th
MARK
Capt. Wempe
Passengers to Southampton will be land in under all circumstances at DAY TIME

1st class Southampton... \$150 gold
For passages apply to the Agent.
Aug. MARQUARDT-25 DE MAYO 175

HANSA LINE
Regular fortnightly sailings by the steamers of the Hansa S.S. Co. of Bremen:

Wartburg Loewenburg
Heimbürg Arensburg
Marxburg Falkenberg
Schoenburg Marienburg

Harzburg and others
For freight and sailing dates from Buenos Aires, Rosario and Montevideo apply to:

H. von FREEDEN, Agent
25 de Mayo 174

Angel Descalzo
ALMACEN POR MAYOR
SEMILLAS Y LEGUMBRES

Casa de consignaciones en cereales y frutos del pais.
Calle Recochea 1274-Boca del Richelieu
68ja x2 xp

THE PACIFIC STEAM NAVIGATION COMPANY.

The Company's steamers are appointed to sail in following order:-From Montevideo
For Europe
OROPESA Feb. 14
For the Pacific
ORCANA Feb. 9th.

Passengers can book for Carril, Ferrol, Rivadeo, Gijon, Santander and Bilbao.
The s.s. Orellana and Orcana do not carry 2nd class passengers.

Through passages issued to West Coast Ports to PANAMA, to NEW YORK connecting with Cunard's Line, and to AUSTRALIA in connection with Orient Line.
In case of detention at Montevideo, through bad weather etc., the ordinary Hotel expenses of passengers will be defrayed by the Company, during such detention.

For passages and full particulars, apply to the Agents:-
WILSON SONS & CO. LIMITED.
Reconquista 365, BUENOS AYRES | 25 de Mayo 214, Esq. Zabala, Montevideo.

N. Z. S. Co.
New Zealand Shipping Co. Limited

Regular monthly Steamers between New Zealand and London, via Montevideo and Plymouth.

RUAHINE
Is appointed to sail from Montevideo on 12th February

FOR PLYMOUTH & LONDON
The steamers of this Line are illuminated by Electric Light, and carry First, Second and third Class passengers.

For passages, fares etc. Apply to the Agents
Wilson, Sons & Co., Lim.
Reconquista 365, 25 de Mayo 214, Montevideo

NELSON LINE.
The following steamers will sail on or about the undermentioned dates:

For LIVERPOOL
Highland Chief Capt. Greig Feb. 8th
Highland Mary Capt. Fraser Feb. 22nd

For LONDON
Highland Scot Capt. Marchison March 7th

HOULDER BROTHERS & Co.
372-Cuyo-372
Montevideo: F. L. Humphreys & Co. Rosario: San Lorenzo 289

Cory Brothers & Co. Ltd.
COLLIERY PROPRIETORS
Cardiff, & 3 Penchurch Avenue, London E. C.

Sole shippers of Cory's Merthyr smokeless Steam Coal. Depots in all the principal ports of the world.

DEPOT IN BUENOS AIRES
Calle Pedro Mendoza 1933
Depot at Grand Dock LA PLATA.

A large stock of the above celebrated Welsh Steam Coal always on hand for supplying steamers at shortest notice, and with the best possible despatch. Railways, Factories, etc. also supplied.

Steamers calling at La Plata to coal only with Cory Bros & Co., Ltd. are free of entry and wharf dues.

For further particulars as to prices etc. apply to the Agent in Buenos Aires
G. DE BOISDUVAL
130 Calle 25 de Mayo
484 a10 xp

LIVERPOOL BRAZIL & RIVER PLATE STEAMERS.

LAMPOR & HOLT'S LINE
Departures from BUENOS AYRES, RIO JANEIRO and NEW YORK.

NEW YORK
LEIBNITZ Brown Feb. 6

ANTWERP
BRITANNIA Brown Feb. 10

LIVERPOOL
HEADLANDS Helman Feb. 15

DUNKIRK
HOMER Farral Feb. 15

ANTWERP
ZODIAC A. Andrew Feb. 20

HAVRE
LOCHIEL J. Epton Feb. 25

ANTWERP
CHAUCER Asken Feb. 25

Landing in Dock.
Cargo and passengers for New York will connect with the New York steamers from Rio.

These steamers have good accommodation for a limited number of passengers at moderate rates.
For freight etc apply to
T. S. BOADLE & Co. Agent.
Calle 25 de Mayo 149.

Special Advertisement.
S.S. LEIBNITZ
Sails for New York
On the 5th of February.

Having splendid accommodation for 1st and 2nd class passengers.

For further particulars apply to
T. S. BOADLE & Co.
25 de Mayo 149
955 320 xp

Paraguayan Rings PARAGUAYAN LACES

582-CUYO-582
Almost corner of Florida, look out for the steel watch over the door.

The largest and most varied assortment of genuine Paraguayan Rings and handcut Laces in South America will be found in this

Jewellery Shop
English and North American watch cleaning and repairing a specialty.
Grand Stock of English Jewellery.
Jewellery executed in any design.
PEDRO CONTRATTI, Proprietor.
English Spoken



The Very Best Paper.
FOR CORRESPONDENCE AND TYPEWRITING &c.
KIDD & HUTTON
385 BOLIVAR 385

J. MUDD & Co.
26-Reconquista-268, Buenos Aires
COAL IMPORTERS
Sole Agents for Messrs Mann George & Co., London & Cardiff.
Depot: GRAN DOCK, LA PLATA
(Late The "La Plata Coal Depot")

Tomkinson Dungey & Co.
Steamship Agents
309-Calle Cuyo-309
BUENOS AIRES
FOR DUNKIRK

MARIE ELSIE 1,661 Tons
To sail on or about 25th January 1896, to load River Parana and Docks.

FOR ANTWERP
S.S. MELBRIDGE 1,885 Tons
To sail on or about 15th February to load in River Parana and Docks

W. SAMSON & Co.
3 STEAMSHIP AGENTS
429-CUYO-429
Buenos Aires
REGULAR SAILINGS FOR

Exposicion Inglesa
638-CUYO-638
Importers and Manufacturers of High Class ENGLISH FURNITURE WORKSHOPS
1479-SALTA-1481.

British Bank of South America
Established 1863
Capital Subscribed £1,000,000
Reserve Fund £500,000

ROYAL HOTEL
782-Corrientes-782
The most fashionable hotel in Buenos Aires.
First class recently built, patronized by the best people.

ROYAL HOTEL
782-Corrientes-782
The most fashionable hotel in Buenos Aires.
First class recently built, patronized by the best people.

BANCO DEL COMERCIO
SAN MARTIN ESQUINA PIEDAD
Capital realzado . . . \$3,000,000 m/n
Fondo de reserva . . . 42,252,42 oro
Id provision . . . 10,000 m/n

London & Brazilian Bank (Limited)
402-CALLE PIEDAD-402
Capital Subscribed . . . £1,500,000
Head Office: 5, TOKENHOUSE YARD, LONDON

Banco Espanol del Rio de la Plata.
180-RECONQUISTA-180
ENTRE PIEDAD Y CANGALLO
Capital Realizado \$5,000,000 nacionales.
SE ABONA m/n oro sellado

Banco Aleman Transatlantico.
Buenos Aires-Reconquista 31
Deutsche Ueberseeische Bank, Berlin
CAPITAL: 20,000,000 MARCHOS

DOCTORS.
DR. M. MURPHY-Physician and Surgeon, Tucuman 692. Consultations 12 to 2 p.m.

DR. E. GRAHAM PILGEM-Rivadavia 657
Flores 12 to 15 p.m. Union Telephone 5354

DR. HUGO-MARCOS-M. D. (London and B Aires)
Consultorio: Calle Malpu 439. Ladies' Nervous and Blood Diseases.

DR. JORGE G. MACKSEY-Flores 429. Horas de Consulta: From 10 a.m. and from 6 to 7 p.m.

DR. HERBERT PENNELL-655 Calle Cangallo. Consultations 1 to 2 1/2 p.m. Telephone 156

DR. SHADDOIT, 1623 Industria, Barracas. Consultation hours, 11 a.m. to 12 noon. Union Telephone 4189.

DR. W. BELLO, profesor graduado de enfermedades de la garganta, nariz y oidos en la Facultad de Medicina. Aires 118. Consultas de 1 a 6 p.m.

ROYAL HOTEL
782-Corrientes-782
The most fashionable hotel in Buenos Aires.
First class recently built, patronized by the best people.

ROYAL HOTEL
782-Corrientes-782
The most fashionable hotel in Buenos Aires.
First class recently built, patronized by the best people.

French Bank of the River Plate
157-CALLE RECONQUISTA-157
Union
Capital \$5,000,000

LONDON & RIVER PLATE BANK (LIMITED)
London, Princes Street E. C. Paris, 16 Rue Halevy.

On accounts current deposits at sight
On deposits at 30 days' notice . . . 1/0
On deposits at 90 days' fixed . . . 1/0

On debit balances in account current . . . m/n oro
Buenos Aires, October 1st 1895.
R. A. THURBURN
Manager.

The New Zealand & River Plate Land Mortgage Company, (Limited)
SUBSCRIBED CAPITAL £2,000,000

TRUSTEES: JOHN FAIR, Esq., Hon. Sidney Herbert, M. P., Frank Parsh, Esq., JOHN MORRIS, Esq., Chairman

The River Trust, Loan & Agency Company, (Limited)
Trustees: JOHN FAIR, Esq., Hon. Sidney Herbert, M. P., Frank Parsh, Esq., JOHN MORRIS, Esq., Chairman

The Anglo-Argentine Bank, (Limited)
15 Nicholas Lane - 15 - London
BUENOS AYRES-Calle Reconquista 78

Authorized capital . . . \$500,000
Capital subscribed . . . 450,000

On deposits in current account
at call . . . m/n oro sellado
At one month's notice . . . 1/0 no int.

Banco de Italia y Rio de la Plata.
FUNDADO EN 1872-BUENOS AIRES
448-CALLE PIEDAD-448.
SE ABONA

Capital autorizado . . . oro activo \$5,000,000
pagado . . . \$2,500,000

For depositors in current account
Id a la vista . . . m/n oro sellado
Id a plazo fijo de 30 dias . . . 1/0 anual

ONORIO STOPPANI.

ENGLISH HIGH SCHOOL

7502—Santa Fe—3600
THE
THIRTEENTH YEAR
BEGINS
8th JANUARY 1896.

**Enrolment of new pupils
EVERY DAY**
FROM 10 TO 1 O'CLOCK.
A. Watson Hutton,
RECTOR.
834 de 26 xp

LOMAS ACADEMY

Boarding and Day-School for Boys
and Girls
For Prospectuses apply to
R. L. GOODFELLOW
Principal

The Lent Term begins on Tues-
day the 7th of January 1896.

Lomas Grammar School INCORPORATED With the National College

The School will open
ON
JANUARY 9th 1896
W. Wyatt Hayward, Lond. Univ.
PRINCIPAL.
777 f18 xp

St. Andrew's SCOTCH SCHOOL

(Founded 1838)
Incorporated with the National College
530—Calle Ituzaingo—552
LAURENCE CHRISTIE, L.A., F.E.L.S.
Head-Master.
New and specially built premises. Open
healthy site, airy class-rooms, spacious play
grounds, every modern convenience: cloak
room, lavatories etc. Large and efficient
staff of teachers, strict discipline. Sound
elementary and secondary education. Special
classes for children speaking either
Spanish or English only. Arrangements
just made for doubling the amount of in-
struction given in Spanish.
A course of Evening Continuation Classes
has been arranged. Pupils from the
camp assisted in finding suitable lodgings.
Fees from \$7 to \$17 per month. Special
trains from and to the Retiro Station in
combination with trains of Central Argentin-
a and Rosario Railways.
Prospectuses on application to Mr. John
Grant, Piedad 494; Messrs. Grant & Syl-
vester, Cangallo 552; the Head-Master at
the school (hours 10 to 3) or to the
School re-opens on Monday, Fe-
bruary 3rd.
M. G. FORTUNE, Hon. Secretary
Piedad 559

College N. S. Lujan

1251 Bolivar, Director Rev. Paul Albertone,
Elemental, Commercial and University
classes. Boarders, Half-boarders and Ex-
terns are received. This establishment of
education is situated in the centre of Buenos
Aires and is highly recommended for its
picturesque and hygienic position. Large
and convenient grounds with more than 50
fruit-trees and all kinds of amusements for
scholars. It is also provided with large sa-
lons for classes, dining-room and bedrooms.
186 j6 f6

North-American Normal School Incorporated with the Nat. College NINTH YEAR.

18th Session.
The Summer Session opens on Jan. 7th.
Hours from 7:30 to 11 a.m.
Boarders, Half-Boarders and Day Pupils.
Special attention given to languages.
Complete course in English and Spanish,
French, German and Latin taught daily by
competent teachers.
For information and prospectuses apply
the school.
470—SUIPACHA—470
e.o.d. 682 j16 xp



Logan & Co.
351--MORENO--351
1:9ap29xp

NICHOLL & HALL

Land, Cattle & General Commission Agents
VILLAGUAY—ENTRE-RIOS.
All information given to intending settlers in
the provinces.
629 n14 f14/36

SANTIAGO KENNY

Corredor de frutos del pais y comisionista
en general.
383-RECONQUISTA-383
ap16r820 xp

J. R. RAMSAY y Cia.

Successors of
Vinda de Diego T. Ramsay,
Wool, Produce, Cereals and Live Stock
Brokers and Consignees.
576—Calle Piedras—576
BUENOS AYRES. 216 xajp

Patents of Invention and Trade Marks.

M. Mendez, Attorney, undertakes to take
out patents and trade marks as expeditiously
as practicable, and also all questions with
the courts and Government. Orders received
at the "Standard" Office on personal inter-
views between 2.30 and 8 p.m.
pm. 451 n9 xp

The Buckeye

Our American Harvesting Machines are of the highest class and
assure to farmers a degree of Economy and satisfaction that is beyond
the reach of all other devices. Purchasers of Buckeye Mowers, Reapers,
and Binders are exempt from the vexatious arising from hurtful com-
plication and cheap construction. Simplicity, strength, durability, con-
venience and large capacity for first-class work in all the conditions of
every crop, are the sterling charac-

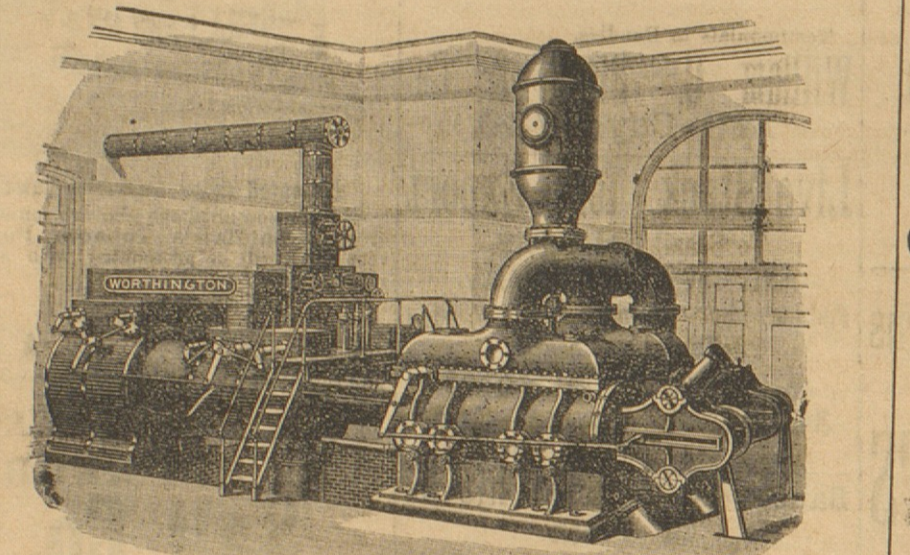


teristics of our machines.
Sole Agents for—
AULTMAN, MILLER & CO.
Akron, Ohio, U.S.A.

Tomas Drysdale y Cia.

438 CALLE MORENO 476
BUENOS AYRES.

Worthington Steam Pumps OF VARIOUS TYPES AND PATTERNS



Worthington High duty pumping Engine
Boiler feed pumps, and low service pumps of
various sizes always in stock for immediate
delivery
SOLE AGENTS AND IMPORTERS

AGAR CROSS & Co.

124 and 136 DEFENSA

CURE YOUR SHEEP

EXTRACTO DE TABACO
SOUTH-DOWN SHEEP WASH
UNICOS AGENTES
PARA CURAR LA SARNA DE LAS OVEJAS
AUG. C. LINCK & CO.
CALLE SAN MARTIN 230
BUENOS AIRES

H. MIDDLETON & SON
241 Calle San Martin, Rosario.
Brokers and General Commission Agents.
Receive goods on consignments for sale
or shipment. Buy and sell cereales, alfalfa
etc. Real Estate Agents. Accept powers
of attorney general or special. Place mo-
ney on mortgage. Audit accounts. Letter
address Castilla 55. 674 j15 f15

HOTEL LA DELICIA

ADROGUE F. C. S.
Only 20 minutes from the Federal Capital
This well known First Class Summer
Hotel boasts a very comfortable residence
for families.
Seventy-five luxuriously furnished apart-
ments with electric lights and bells. Bath
rooms on each floor.
Excellent cuisine and best service.
Good horses and private carriages in the
Hotel. The \$4 Return Tickets to be taken
at the Constitución Station, including
breakfast or dinner and half a bottle of
Medoc. For information apply to
L. Schäfer.
e.o.d. 451 n9 xp

**NOTICE
The BRITANNIA HOTEL**
521—CANGALLO—r31
Owing to the satisfactory increase in the
demand upon this hotel, the proprietors have
added several suites of rooms fitted with every
comfort and elegance. The Hotel has been
renovated throughout and fitted with all the
latest conveniences. Beds, Baths, and per-
fect sanitary arrangements. They have there-
fore every confidence in expecting a continu-
ance of the support given to this enterprise
particularly by the English community.
Private drawing rooms, Ladies' rooms
Service throughout English
Prices Moderate 770 21 dx

Enrique Thompson é Hijo
WOOL AND GENERAL PRODUCE
BROKERS
Receive consignments in the Central
Constitucion and Once de Setiembre markets
Offices 290 Reconquista. 488 d2 xp

MARTELL'S BRANDY

OLD Very Old
BRANDY PALE
ONE E.X.S.O.
STAR

Sole Importers
Moore & Tudor

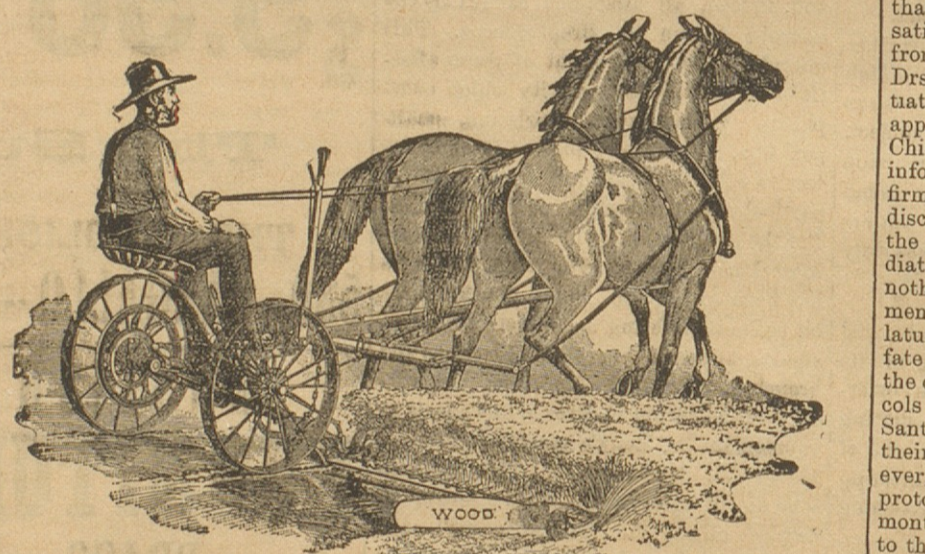
J. & F. MARTELL COGNAC

SOLE IMPORTERS
MOORE & TUDOR

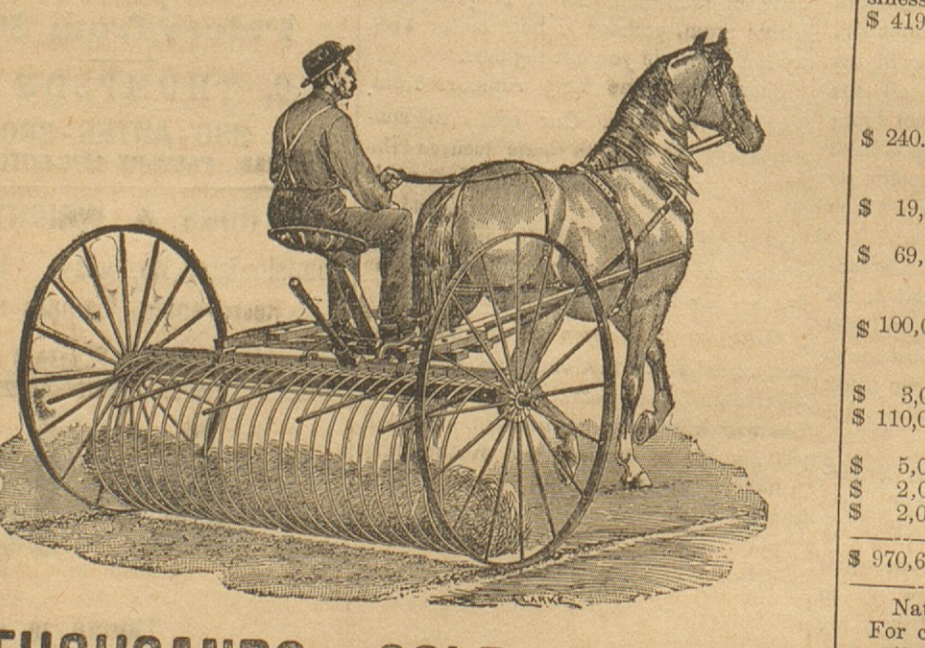
Juan and Jose Drysdale & Co.

440—CALLE PERU—450
BUENOS AIRES

SOLE IMPORTERS OF THE CELEBRATED
WALTER A. WOOD'S



MOWERS & HAY RAKES



THOUSANDS SOLD YEARLY

JAMES SMART
TAILORS
Breeches and Habit Makers
We beg to advise that we have engaged the services of an
experienced shirt-cutter and that we have received a large assort-
ment of materials for Gentlemen's underwear.
Ladies' blouses made to measure.
556--PIEDAD--566

Cuatro Cosas Buenas

JUEGO TRIELADORA "ROBEY"
ATAJADA "LA VICTORIOSA"
GUADAJADORA "LA RUTLAND"
RASTRILLO "EL STANFORD"
IMPORTED ONLY BY
FABRICANTES INGLESES
Who challenge trials against any other
machines
Address—
302 BALCARCE, BUENOS AYRES
ARTHUR GEO. PRUDEN
Manager.
THE MANAGER of *Corn Trade News*
Liverpool, England, the leading organ of the
wholesale grain trade in Europe, will
have pleasure in sending to any reader of
the Buenos Aires Standard, specimen co-
pies of the various editions of his journal.
Address "Manager," P. O. 51, Liverpool
England.

ON 'CHANGE.

Tuesday, February 4th 1896.
Gold Premium.

FIRST RING..... 217.40%
SECOND RING..... 217.60%
There was another sharp snap in the
market this morning, and at first brush
the gold premium opened so weak-kneed,
in such a fainting condition, that it look-
ed bound for the neighborhood of 200%.
The weakness, however, did not last
long and a strong bullish blast soon rail-
led the bulls and the market; up went
the premium two points, to the amaze-
ment of the bears. "What's up?" was the
query in the bearish camp. Some said
that a sudden demand had sprung up for
the French packet which sails to-morrow;
very probable. Others remarked that the
shrewd dealers were buying and smelt a
rat—some news from Chile, they said.
But this was moonshine. A plausible
argument is that when gold touched 215%
premium many rushed in to cover, and in
the scramble for margins gold went up
like a rocket.

About a million gold dollars changed
hands at the first ring. The demand for
cash gold was exceptionally stiff, and nearly
half a million on had to be supplied; the
premium opened at 215.50%, rose rapidly,
and closed at 217.40%. A quarter of a
million was sold for the end of the month;
the premium opened at 217.50% and closed
at 219.50%—two points contango only.
One hundred thousand dollars were sold
for the 15th, the premium closing at 215
%. Business for the end of March slight-
ly exceeded one hundred thousand dol-
lars; the premium opened at 221% and
closed at 222%—contango of 4% points.
The market closed with a bullish tendency.
The sudden check to the fall in gold was
nothing short of a surprise, but people
seem to forget that the gold market this
morning stood 15 points lower than a fort-
night ago—a strong temptation to cover
at such margins. The nearer gold gets
to 200% premium the stronger the conviction
in outside quarters that the time to
buy is at hand. To-day proved both facts
to the enthusiastic bears.

A rumour is running round the market
that some private information of a very
satisfactory nature has been received
from Chile. The news in question is that
Drs. Quirno Costa and Guerrero will nego-
tiate directly and sign a protocol with the
approval of the two Governments, that of
Chile and that of Argentina. In well-
informed quarters this statement is con-
firmed. None doubt that if left to the
discretion of Guerrero and Quirno Costa
the Chilean question would be imme-
diately settled, but the difficulty is that
nothing but an "ad referendum" settle-
ment can be signed; the respective Legis-
latures, here's the rub, must decide the
fate of any protocol. We all remember
the days of 1877 and 1878, when proto-
cols and treaties succeeded each other in
Santiago and matters were aggravated by
their rejection. In Bolsa circles, how-
ever, there is a general belief that a
protocol will be signed in Santiago this
month, and great importance is attached
to the "expectativa," especially from a specu-
lative point of view.

National Cédulas P were very dull at
79.40 and La Plata Cédulas at 17.30. A
few hundred shares of the Spanish Bank
changed hands at 107 and of the Argentin-
e Paper Factory at 112.
The following is a summary of the busi-
ness effected at the first ring to-day:—
\$ 419,600 for cash at 315.50-316.31.80-
316.31.80-316.31.80-316.31.80-
50-80-317-316.80-50-80-90-317-
317.20-317-316.80-317-317.20-
80-40.
\$ 240,000 February 25th at 317.50-318-
318.50-318-318.50-319-318.50-
319-319.50-319-319.50.
\$ 19,500 February 5th at 316.50-316-
316.80-317.
\$ 69,500 February 8th at 316-316.50-317-
316.50-317.30-50-317-317.30-
317.50.
\$ 100,000 February 15th at 316.50-317-
316.80-317-317.50-318-317.50-
318.
\$ 8,000 February 22nd at 318.50.
\$ 110,000 March 31st at 321-322-321.50-
322.
\$ 5,000 March 15th at 321.50.
\$ 2,000 February 10th at 317.
\$ 2,000 February 20th at 318.
\$ 970,640

National Hypothecary Cédulas—
For cash, F 8,000 at 79.40.
Provincial Hypothecary Cédulas—
For cash, 8% 21,500 at 17.30.
Spanish Bank—
For cash, 200 at 107.00.
Argentine Paper Factory—
For cash, 100 at 112.
Value of gold coins in moneda legal ac-
cording to closing gold quotations of first
ring:—
Ounces..... 51.60%
Sovereigns..... 16.00%
The Banco del Comercio will begin
paying to-morrow a dividend of 83% per
share. This is 50 cents more than last
dividend.

Although the French packet leaves to-
morrow, the exchange market was
signally dull to-day. Bills on London
were offering at 48 3/4 d, but there were no
takers under 48 1/2 d. Marks were freely
offered at 4.12 1/2 on Germany. Francs
remained unaltered at 6.99 on France and
5.10 on Belgium.
Paper discounts were steady at 8% and
gold nominal at 7%.
Telegrams from Rio Janeiro this after-
noon quoted exchange on London at
9 3/32d. The rate in Valparaiso was 17 1/2 d;
the advance of two millions sterling by
Rothschild has failed to put up Chilean
exchange.

