

Banco Hipotecario.

Esta abarca el servicio publico todos los... Banco Hipotecario. (LIMITED) London, Buenos Ayres, Montevideo, Rosario, and Cordoba.

Junta del Credito Publico.

Buenos Aires, Diciembre 14 de 1881... Junta del Credito Publico.

Bank of Ireland.

Bank of Ireland. DUBLIN. Bills of Exchange on the above Bank...

Lloyd Argentino de Navegacion a Vapor.

Lloyd Argentino de Navegacion a Vapor. Buenos Aires and Campana Railway Co.'s Steamers.

English Grocery and Drapery Store.

English Grocery and Drapery Store. ALBERT GEBBIE. 47, 49 & 53 DEFENSA.

Paris Boot and Shoemaker.

Paris Boot and Shoemaker. 161-Corrientes-163.

Teel Wire.

Teel Wire. Schneider & Co. Steel Wire of the Oronot.

Anglo Argentine Seminary.

Anglo Argentine Seminary. 595-Corrientes-595. James M. Grace.

Anglo Argentine Seminary.

Anglo Argentine Seminary. 595-Corrientes-595. James M. Grace.

Anglo Argentine Seminary.

Anglo Argentine Seminary. 595-Corrientes-595. James M. Grace.

Anglo Argentine Seminary.

Anglo Argentine Seminary. 595-Corrientes-595. James M. Grace.

The Standard AND RIVER PLATE NEWS.

No. 5,871. BUENOS AIRES—WE N SDAY, DECEMBER 8, 1881. 21st Year.

Banco de Italia.

Banco de Italia. RIO DE LA PLATA. 98 Calle Piedad 98. Capital en oro efectivo, \$1,500,000.

The English Bank of the River Plate.

The English Bank of the River Plate. Limited. Temporary Premises 94-CANGALLO-94. Authorized Capital £1,500,000.

Chargours Reunis.

Chargours Reunis. French Steam Navigation Company. The following Steamers of this Company will be despatched from MONTEVIDEO.

P.S.N.C. Pacific Steam Navigation Company.

P.S.N.C. Pacific Steam Navigation Company. Quick Route from the River Plate to Europe and the Pacific.

Hotel Providence.

Hotel Providence. Cangallo, No. 29. Fine suite of Rooms for Families, Clergymen, students, and others.

Banco Carabassa & Cia.

Banco Carabassa & Cia. 157-CANGALLO-157. Desde esta fecha hasta nuevo aviso la tasa de interes sera como sigue:

Regular Monthly Line of Steamers.

Regular Monthly Line of Steamers. Between Rotterdam and the R. Plate. The splendid Dutch Steamer ARIADNE.

Imperial German Mail.

Imperial German Mail. Hamburg and South American Steamship Company. Direct B. Monthly Line between the River Plate and Hamburg.

North German Lloyd.

North German Lloyd. LINE FROM BREMEN GERMAN IMPERIAL MAIL STEAMERS.

Hotel de la Paix.

Hotel de la Paix. Englethen and others visiting B. Ayre will find every comfort at the Hotel de la Paix.

Banco de la Provincia.

Banco de la Provincia. Recibe depositos voluntarios que no bajen de 400 pesos en 7/8 de fin de curso legal y oro efectivo.

Colegio Ingles.

Colegio Ingles. Artes 170. Established in 1860. The yearly examinations having terminated, school on this date for the term vacation.

Seminary of Our Lady of Lujan.

Seminary of Our Lady of Lujan. Directed by the Priests of the Congregation of the Mission. Classes will be re-opened on Jan. 11th, 1882.

Holy Cross College.

Holy Cross College. 595-Corrientes-595. James M. Grace. The annual examinations having concluded, the winter term will commence on Monday 24th inst.

Colegio Ingles.

Colegio Ingles. GRAL. LAVALLE 651. The annual examinations having concluded, the winter term will commence on Monday 24th inst.

Universal Marine Insurance Co.

Universal Marine Insurance Co. (LIMITED). SUBSCRIBED CAPITAL: \$1,000,000. OFFICE: 31 CORNHILL, LONDON.

Anglo Argentine Seminary.

Anglo Argentine Seminary. 595-Corrientes-595. James M. Grace. The annual examinations will commence on Monday 24th inst.

Anglo Argentine Seminary.

Anglo Argentine Seminary. 595-Corrientes-595. James M. Grace. The annual examinations will commence on Monday 24th inst.

Anglo Argentine Seminary.

Anglo Argentine Seminary. 595-Corrientes-595. James M. Grace. The annual examinations will commence on Monday 24th inst.

Anglo Argentine Seminary.

Anglo Argentine Seminary. 595-Corrientes-595. James M. Grace. The annual examinations will commence on Monday 24th inst.

Anglo Argentine Seminary.

Anglo Argentine Seminary. 595-Corrientes-595. James M. Grace. The annual examinations will commence on Monday 24th inst.

Anglo Argentine Seminary.

Anglo Argentine Seminary. 595-Corrientes-595. James M. Grace. The annual examinations will commence on Monday 24th inst.

Anglo Argentine Seminary.

Anglo Argentine Seminary. 595-Corrientes-595. James M. Grace. The annual examinations will commence on Monday 24th inst.

Anglo Argentine Seminary.

Anglo Argentine Seminary. 595-Corrientes-595. James M. Grace. The annual examinations will commence on Monday 24th inst.

Anglo Argentine Seminary.

Anglo Argentine Seminary. 595-Corrientes-595. James M. Grace. The annual examinations will commence on Monday 24th inst.

Banco Nacional.

Banco Nacional. 42-RECONQUISTA-42. Horas de oficina de 10 a.m. a 4 p.m.

ABONARA.

ABONARA. Sobre depósitos en oro, a la vista... Id a 90 dias... Id en moneda de curso legal...

Hotel Providence.

Hotel Providence. Cangallo, No. 29. Fine suite of Rooms for Families, Clergymen, students, and others.

Hotel de la Paix.

Hotel de la Paix. Englethen and others visiting B. Ayre will find every comfort at the Hotel de la Paix.

Hotel de la Paix.

Hotel de la Paix. Englethen and others visiting B. Ayre will find every comfort at the Hotel de la Paix.

Hotel de la Paix.

Hotel de la Paix. Englethen and others visiting B. Ayre will find every comfort at the Hotel de la Paix.

Hotel de la Paix.

Hotel de la Paix. Englethen and others visiting B. Ayre will find every comfort at the Hotel de la Paix.

Hotel de la Paix.

Hotel de la Paix. Englethen and others visiting B. Ayre will find every comfort at the Hotel de la Paix.

Hotel de la Paix.

Hotel de la Paix. Englethen and others visiting B. Ayre will find every comfort at the Hotel de la Paix.

Hotel de la Paix.

Hotel de la Paix. Englethen and others visiting B. Ayre will find every comfort at the Hotel de la Paix.

Hotel de la Paix.

Hotel de la Paix. Englethen and others visiting B. Ayre will find every comfort at the Hotel de la Paix.

Hotel de la Paix.

Hotel de la Paix. Englethen and others visiting B. Ayre will find every comfort at the Hotel de la Paix.

The Standard NEW OFFICES 162-163-164-165 Job Printing of every description done in the very best style

Politeama Argentino A las 8 y 10. Empresa a Moreno y Ca. Compañia Dramatica Italiana ADELALDE TESSERO

LA FLORIDA Teatro de Verano Miercoles 28 de Diciembre A las 8 y 10 de la noche

GRAN CONCIERTO ORQUESTRAL Gran Orquesta compuesta de los mas notables solistas que hay en el pais

American M. E. Church. NEXT TWO NIGHTS WEDNESDAY 28th December THURSDAY 29th AT EIGHT O'CLOCK OF THE GRAND BAZAAR

N.B. Rare Bargain For 20 Dollars a chance of becoming proprietor of a Splendid Milk Cow and Calf

Seminario Ingles 580-Cangallo-580 ADOLFO L. NEGROTTI DIRECTOR

British Hospital. Wanted a sober man to act as Porter in the above Institution

Christmas Cards New Year Cards BIRTHDAY CARDS

L. JACOBSEN & Co. 242-Calle Florida-244

British Academy 249-Calle Bolivar-249

Information required THOMAS JOHNSTON, a native of Norway

Peter Forbes Ship Store Dealer and General Provision Merchant

AVISO La Agencia del Lloyd Norte Aleman se ha mudado a la Calle Maipu No. 101, alto

SE ALQUILAN Pizzas en los dos grandes edificios Calle Reconquista 212 y Chacabuco 110

WANTED for the camp a married couple to attend upon a family

FEMALE-COOK WANTED, German or English, good wages

HOUSEWIFE. A young girl wishes a situation as Housewife

A good Plain Cook wishes situation in town or camp

WANTED an English female Cook for an Estancia in the Banda Oriental

Royal Mail Steam Packet Company FOR ANTWERP

MONDEGO Commander I. R. DICKINSON 2,554 Tons, 450 Horse-power

THROUGH TICKETS SOUTHAMPTON AND ANTWERP

REDUCED RATES MAILS, SPECIE, CARGO AND PARCELS TO ALL THE ABOVE PORTS

REDUCED RATES Are granted to 1st class passengers with deduction of 25 cts on the passage

FAMILIES AND COMPANIES A considerable reduction is made in their favor

Or to HENRY A. GREEN, Broker, 175-Reconquista-175

L'pool Brazil and K.P. Steamers LAMPPOST & HOLTS LINE

ANTWERP & LIVERPOOL (via Southampton) Back JANUARY 1

ANTWERP & LIVERPOOL (via Southampton) Back JANUARY 5

ANTWERP & LIVERPOOL (via Southampton) Back JANUARY 8

ANTWERP & LONDON (via Rio Janeiro and Southampton) Back JANUARY 21

ANTWERP & LIVERPOOL (via Southampton) Back JANUARY 26

ANTWERP (via Rio Janeiro and Southampton) Back FEBRUARY 1

ANTWERP (via Southampton) Back FEBRUARY 1

ANTWERP (via Southampton) Back FEBRUARY 1

ANTWERP (via Southampton) Back FEBRUARY 1

ANTWERP (via Southampton) Back FEBRUARY 1

ANTWERP (via Southampton) Back FEBRUARY 1

ANTWERP (via Southampton) Back FEBRUARY 1

ANTWERP (via Southampton) Back FEBRUARY 1

FLUIDO CREO TONICO V. CASARES E HIJOS

WIN SANTI The most perfect aerated non-alcoholic Beverage

Sparkling Delicious Exhilarating Gratifying For Balls, Picnics, Dinners Suppers At Homes at Clubs and at all times.

Vin Sante Sparkling as Champagne Most valuable to the overworked brain

Vin Sante Nutritive and wholesome Taken with meals, it stimulates the appetite and assists digestion

ATTENTION Is called to the fact that at the recent International Food Exhibition, held in the Agricultural Hall, London, Vin Sante obtained the

ONLY PRIZE MEDAL awarded to aerated Beverages

SOLE DEPOT LA TETERA 101-Cangallo-101 Buenos Aires

GOLDEN FLEECE DIP ESPECIFIC VELLON DE ORO

THE BEST REMEDY KNOWN FOR THE THOROUGH CURE OF SCAB IN SHEEP

UNRUALED FOR ECONOMY. Ready for use, adding COLD WATER

Webster's Unabridged. NEW EDITION OF WEBSTER'S DICTIONARY

HOP BITTERS THE PUREST AND BEST THEY ARE COMPOUNDED FROM Hops, Root, Mandaraka and Dandelion

The Blagden Dip (FLUIDO BLAGDEN) MANUFACTURED BY JEYES SANITARY COMPOUNDS CO., LIMITED

FLUIDO LITTLE BEWARE OF ALL CLUMSY Imitations of this Original Fluid Dip!

THE BEST DIP FOR THE ORE OF SOAP

RUNCIMAN & CO. 73-CALLE PIEDAD-73 Exposicion Continental

Alambre Patent. Campana Extra No. 1 Resistencia 2136 lbs

Charles Store & Co. Ship-Brokers 178-Calle San Martin-178 BUENOS AIRES

NEW YEARS GIFTS Illustrated Books Juvenile Literature

Hungarian Wines. A small consignment of the best Hungarian Wines just imported

Christmas Presents SEPARABLE BUTTONS-A large and varied assortment of these useful and elegant Buttons always on hand

Articulos Incomparables 1. 2. 3. 4. 5. 6. 7. 8. 9. 10. 11. 12. 13. 14. 15. 16. 17. 18. 19. 20.

Associated Press Telegram HAVAS AGENCY Constantino 25. Military mutiny at Suez completely suppressed

TRIP TO THE RIO NEGRO. BAHIA BLANCA. First impressions! who derives them? Their stamp is indelible

LONDON LETTER. (From our Own Correspondent) MEAT PRESERVING-THE HASLAM PROCESS

THE PATAGONIA. In the pages of the 'Graphic' and 'Illustrated London News'

and here we paused for 'Cerveza.' 'Cerveza,' thy very name is associated with our sweetest and earliest remembrances of the Plate

count of the affair. We may add that Mr Jago is a very young man, a native of Ireland, and a thorough sea man

FRUITFUL ADVENTURE AT SEA. The two survivors of the ketch Abra, which was lost off the Irish coast, and by which disaster the captain lost his life, were landed at Liverpool by the Pacific Steam Navigation Company's steamer Cordillera, from Bordeaux

and here we paused for 'Cerveza.' 'Cerveza,' thy very name is associated with our sweetest and earliest remembrances of the Plate

and here we paused for 'Cerveza.' 'Cerveza,' thy very name is associated with our sweetest and earliest remembrances of the Plate

and here we paused for 'Cerveza.' 'Cerveza,' thy very name is associated with our sweetest and earliest remembrances of the Plate

lan's machinery is already the steamships Orient, C...

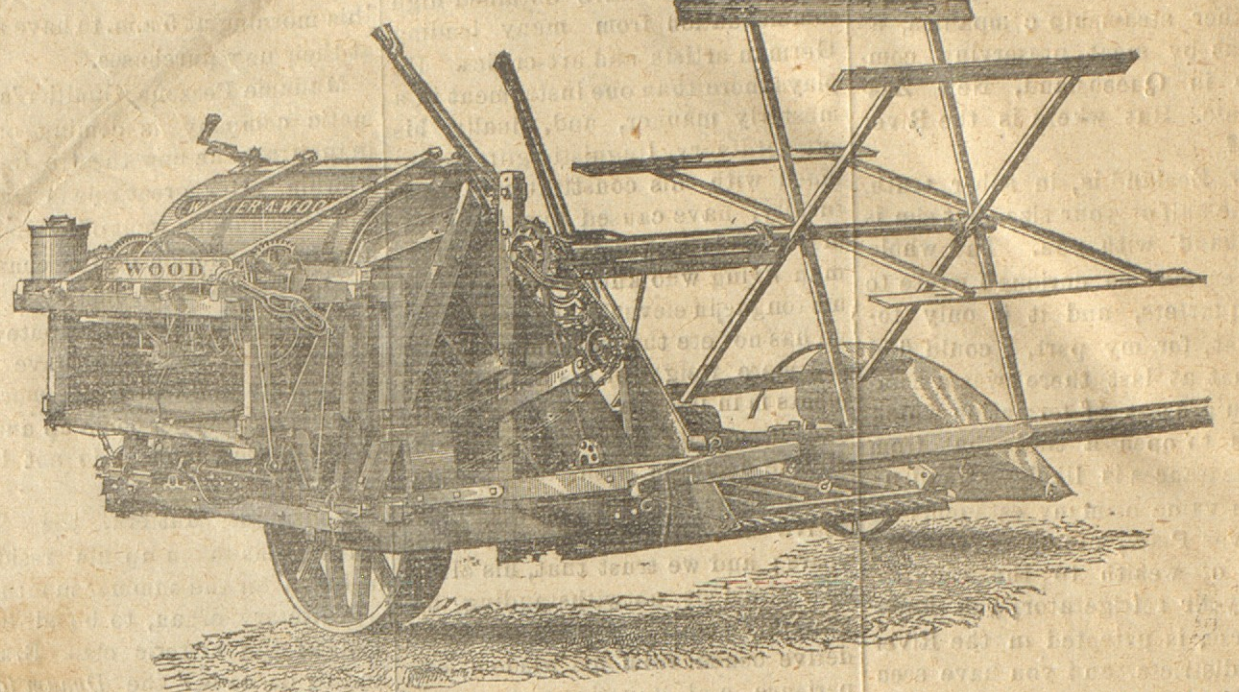
REMATE
Baltar & Quesada
110 Toros Durham
78 y 84 Sangre
Origen Afaró y Tapias
SAN MARLANO
Que perteneció a Don Juan J.
Escarta.

EN SEGUNDA
Varias charras y solares
BAHIA BLANCA
Maldonado
20 cuadras con casa de campo

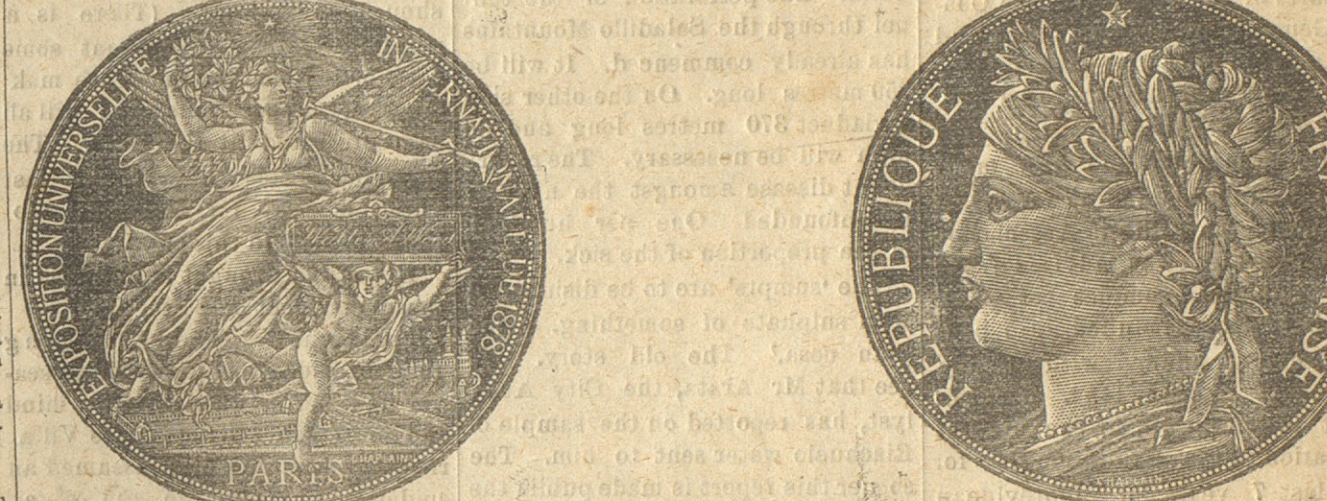
EN SEGUNDA
Varias charras y solares
BAHIA BLANCA
Maldonado
20 cuadras con casa de campo

EN SEGUNDA
Varias charras y solares
BAHIA BLANCA
Maldonado
20 cuadras con casa de campo

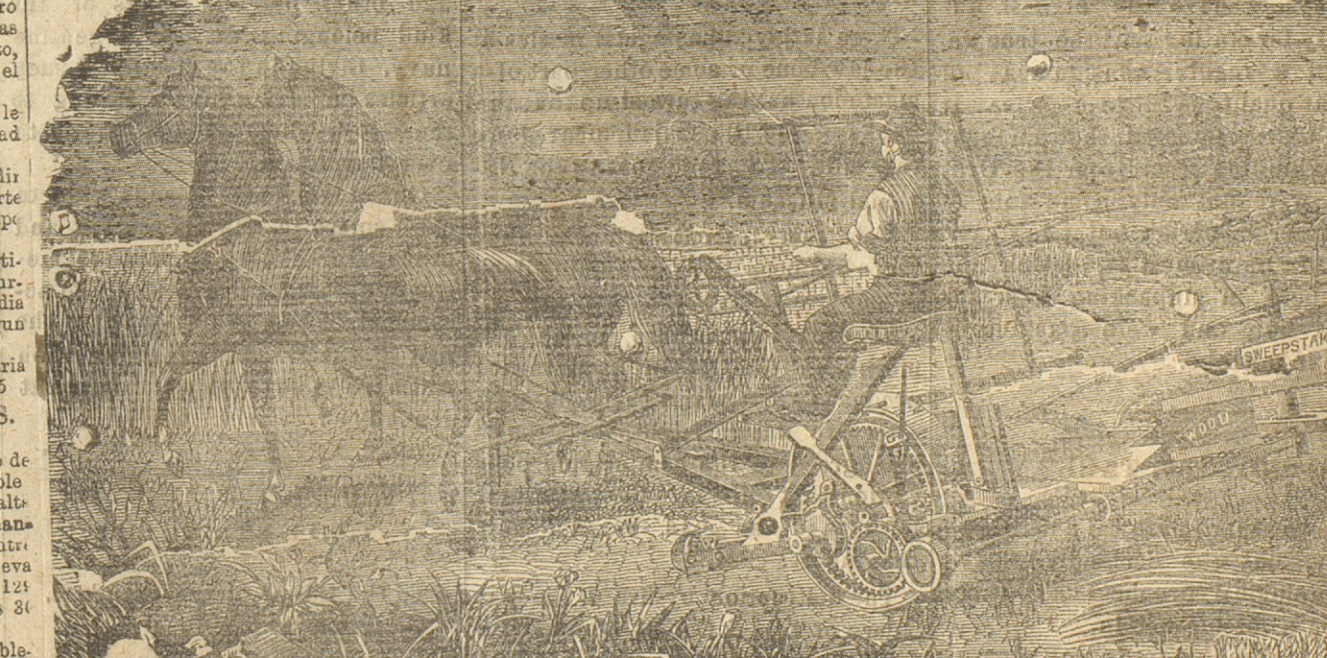
THOMAS DRYSDALE & CO.
96 MORENO 96 BUENOS AIRES
SOLE IMPORTERS OF
WALTER A WOOD'S HARVESTING MACHINES



The Walter A. Wood again victorious.
Report of the Rochester Trial—The Jurors awarded to WALTER A. WOOD'S TWINE BINDER THE FIRST PRIZE.



WALTER A. WOOD'S
CHAIN-RAKE REAPER



The Wood Reapers have met and defeated in public competitions the
MACHINES OF
OSBORNE 78 Times
JOHNSTON 43 "
HORNBY 26 "
HOWARD 26 "
BUCKEYE 26 "

ALAMBRES ESPECIALES
DE ACERO Y FIERRO

RYLAND
Alambre de Ryland
No. 7, 464 lbs. 2180 lb. de resistencia

ALAMBRES ESPECIALES
DE ACERO Y FIERRO
RYLAND
Alambre de Ryland
No. 8, 464 lbs. 2180 lb. de resistencia

ALAMBRES ESPECIALES
DE ACERO Y FIERRO
RYLAND
Alambre de Ryland
No. 9, 464 lbs. 2180 lb. de resistencia

ALAMBRES ESPECIALES
DE ACERO Y FIERRO
RYLAND
Alambre de Ryland
No. 10, 464 lbs. 2180 lb. de resistencia

ALAMBRES ESPECIALES
DE ACERO Y FIERRO
RYLAND
Alambre de Ryland
No. 11, 464 lbs. 2180 lb. de resistencia

ALAMBRES ESPECIALES
DE ACERO Y FIERRO
RYLAND
Alambre de Ryland
No. 12, 464 lbs. 2180 lb. de resistencia

ALAMBRES ESPECIALES
DE ACERO Y FIERRO
RYLAND
Alambre de Ryland
No. 13, 464 lbs. 2180 lb. de resistencia

REMATE
Baltar & Quesada
110 Toros Durham
78 y 84 Sangre
Origen Afaró y Tapias
SAN MARLANO
Que perteneció a Don Juan J.
Escarta.

REMATE
Baltar & Quesada
110 Toros Durham
78 y 84 Sangre
Origen Afaró y Tapias
SAN MARLANO
Que perteneció a Don Juan J.
Escarta.

REMATE
Baltar & Quesada
110 Toros Durham
78 y 84 Sangre
Origen Afaró y Tapias
SAN MARLANO
Que perteneció a Don Juan J.
Escarta.

REMATE
Baltar & Quesada
110 Toros Durham
78 y 84 Sangre
Origen Afaró y Tapias
SAN MARLANO
Que perteneció a Don Juan J.
Escarta.

REMATE
Baltar & Quesada
110 Toros Durham
78 y 84 Sangre
Origen Afaró y Tapias
SAN MARLANO
Que perteneció a Don Juan J.
Escarta.

EN SEGUNDA
Varias charras y solares
BAHIA BLANCA
Maldonado
20 cuadras con casa de campo

EN SEGUNDA
Varias charras y solares
BAHIA BLANCA
Maldonado
20 cuadras con casa de campo

EN SEGUNDA
Varias charras y solares
BAHIA BLANCA
Maldonado
20 cuadras con casa de campo

EN SEGUNDA
Varias charras y solares
BAHIA BLANCA
Maldonado
20 cuadras con casa de campo

EN SEGUNDA
Varias charras y solares
BAHIA BLANCA
Maldonado
20 cuadras con casa de campo

EN SEGUNDA
Varias charras y solares
BAHIA BLANCA
Maldonado
20 cuadras con casa de campo

EN SEGUNDA
Varias charras y solares
BAHIA BLANCA
Maldonado
20 cuadras con casa de campo

EN SEGUNDA
Varias charras y solares
BAHIA BLANCA
Maldonado
20 cuadras con casa de campo

EN SEGUNDA
Varias charras y solares
BAHIA BLANCA
Maldonado
20 cuadras con casa de campo

EN SEGUNDA
Varias charras y solares
BAHIA BLANCA
Maldonado
20 cuadras con casa de campo

EN SEGUNDA
Varias charras y solares
BAHIA BLANCA
Maldonado
20 cuadras con casa de campo

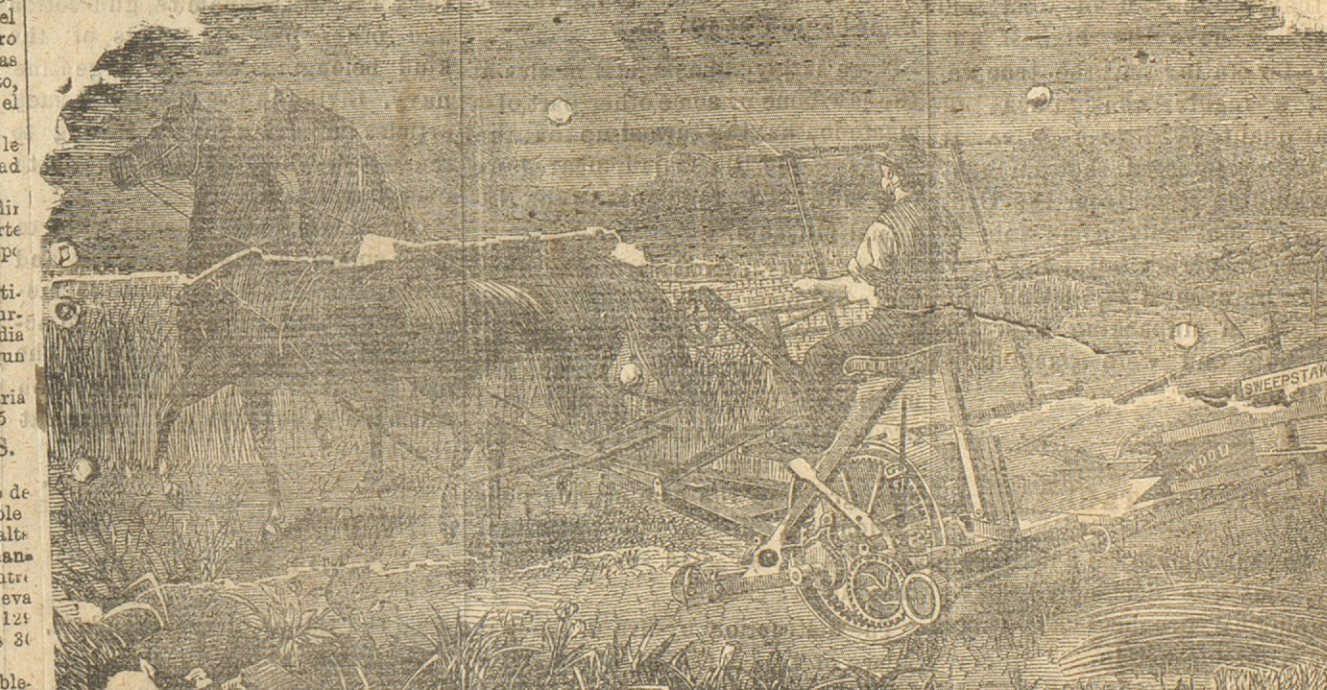
EN SEGUNDA
Varias charras y solares
BAHIA BLANCA
Maldonado
20 cuadras con casa de campo

EN SEGUNDA
Varias charras y solares
BAHIA BLANCA
Maldonado
20 cuadras con casa de campo

EN SEGUNDA
Varias charras y solares
BAHIA BLANCA
Maldonado
20 cuadras con casa de campo

EN SEGUNDA
Varias charras y solares
BAHIA BLANCA
Maldonado
20 cuadras con casa de campo

WALTER A. WOOD'S
CHAIN-RAKE REAPER



The Wood Reapers have met and defeated in public competitions the
MACHINES OF
OSBORNE 78 Times
JOHNSTON 43 "
HORNBY 26 "
HOWARD 26 "
BUCKEYE 26 "

ALAMBRES ESPECIALES
DE ACERO Y FIERRO

RYLAND
Alambre de Ryland
No. 7, 464 lbs. 2180 lb. de resistencia

ALAMBRES ESPECIALES
DE ACERO Y FIERRO
RYLAND
Alambre de Ryland
No. 8, 464 lbs. 2180 lb. de resistencia

ALAMBRES ESPECIALES
DE ACERO Y FIERRO
RYLAND
Alambre de Ryland
No. 9, 464 lbs. 2180 lb. de resistencia

ALAMBRES ESPECIALES
DE ACERO Y FIERRO
RYLAND
Alambre de Ryland
No. 10, 464 lbs. 2180 lb. de resistencia

ALAMBRES ESPECIALES
DE ACERO Y FIERRO
RYLAND
Alambre de Ryland
No. 11, 464 lbs. 2180 lb. de resistencia

ALAMBRES ESPECIALES
DE ACERO Y FIERRO
RYLAND
Alambre de Ryland
No. 12, 464 lbs. 2180 lb. de resistencia

ALAMBRES ESPECIALES
DE ACERO Y FIERRO
RYLAND
Alambre de Ryland
No. 13, 464 lbs. 2180 lb. de resistencia

The Iberia's Mail

London, Nov.
In a Paris journal there is a
announcement that the new Mini
Public Worship is engaged in
ing up a Bill regulating the
tions of Churches and Societies
upon the Concordat but also of
the Declaration of 1802, as w
all the laws and decrees issued
1802 which have increased the
rriages of the Church.
Yesterday the German Parli
amendment the discussion
second reading of the Budget.
Bismarck was present, and in
the debate more than one
seems to have fairly abused
opponents, and to have clar
fied his position in refer
ence to the
Communications from
now a sure as that there was
al, quest train in the re-o-re
from San America. The
arose from some panic con
among the Arab tribes. The
garrison in Algeria are on th
and ready for any enemy.
Much is still being said
politicians in Europe as to
stable effect of the Danub
speech on Austria, if we ma
question. Vienna press, fr
from the East, it is said,
angry. England, it is said,
that she can out
port Komtalia to a certai
while the attitude of Fran
yet rather doubtful.
It is announced that
has been summoned for
then to meet for the despa
siness.
At Enghy, yesterday, Mr
was presented with an ad
distinguished English an
man. He dwelt at length
question of local governm
its extension in the directi
bill of 1871, and was pre
a large extension and sim
of local franchises. In re
the land question, Mr
thought the time opportun
lation—if Ireland permit
thing to be done at all—
rest of relieving the land
burden of dowries and set
and of granting security
farmers, but he was oppos
sile.
Speaking at Richmond,
theing at Richmond, th
Viscount Minto had trou
great length, on the im
policy of the Governmen
said his language, caused
den of the country and
the respect of his peopl
Leiry, the murderer o
was banged yesterday
within Lewis Gail. He
with some assistance, to
but was pale and haggard
nothing, and death app
instantaneous. Dail's t
sleep well. But a cou
small number of persons
ed outside the prison
black flag was hove
left a statement expla
cluding it impossible to
Mr Gold's waton, he
over Blackfars. End
Thames. He said that
on the morning of the
sperate mood, determ
money by whatever m
The subject app
nightly Gazette, at
Windsor, the 29th day
1881. Present, the
Excellent Majesty in
May-sty in Couci
pleased to declare
contract of marriage
Royal Highness Pr
Bogal Dunca Al
Albion, Earl of Sax
of Sax, Duke of Saz
K.P., G.C.S.G., G.C
Serene Highness
Helen Federa Al
of His Serene High
Prince of Waldeck
which consent neces
caused to be signi
Great Seal."
In the matter of
tion of the large t
by late Mr. F.
for the benefit of
don, Vice-Chancel
decided in favour o
posed by the A
This is to deve
to educational pur
direction of a boar
The Corporation i
care and disciplin
Dr. Diplock, who
sent engaged in t
the circumstances
the death of a y
man, Mrs. Julia G
Olesea, about w
goal deal of wisd
atoms proceeding
extraordinary th
attended net relat
cause of death,
and intestines w
analysed, a Ver
stryouish has be
inquiry has bee
to allow for
the various out
to the Queen'
Messrs. may a
agents in the M
are sent to sev
Mosca. It was
prominent in t
with election,
for six months

The Iberia's Mails.

London, Nov. 30. In a Paris journal there is an announcement that the new Minister of Public Worship is engaged in drawing up a Bill regulating the relations of Church and State, based upon the Concordat...

Yesterday the German Reichstag opened the discussion on the second reading of the Budget. Prince Bischoff was present, and joined in the debate more than once.

Communications from Algeria now assure us that there was not the slightest truth in the reported invasion of Bon Amens. The rumors arose from some panic confusion among the Arab tribes.

Much is still being said among politicians in Europe as to the possible effect of Prince Charles's speech on the Danube navigation question. Austria, if we may judge from the Vienna press, is very angry.

It is announced that Parliament has been summoned for Feb. 7th, then to meet for the despatch of business.

At Rugby, yesterday, Mr Goschen was presented with an address, as a distinguished Englishman and statesman. He dwelt at length on the question of local government...

The Buildings are situated on the barranca of the Paraná, and from the River they present a very imposing aspect. They adjoin the Central Argentine Railway Station on the West, and the main line of the railway passes in front of the Elevator.

The main deposit will hold 500,000 cwt. of wheat, and covers a space of 3288 by 2665 metres inside of thick brick walls that enclose it on all sides.

Adjoining the main building or deposit to the South is a large solid tower covering a space of 10.50 by 9 metres, and 40 metres in height, having ten floors including the basement.

The Distributor is a light edifice constructed on the top of the main deposit. Here are fixed the two fine rubber band conveyers, each capable of carrying 30 tons per hour.

There are only two small openings connecting the tower, and which from deposit tower, and which have iron doors as precaution against fire; the deposit therefore may be considered fire-proof.

The engine house on the west side of the main building covers a space of 12.38 by 7.46 metres and is perfectly fire-proof; in this is fixed a steam horse power compound and condensing engine with two locomotive boilers, built by Messrs Jannet, Walker & Co, of Leeds England.

There are also a place where grain is taken in from carts; all the above operations are with wheat in bulk; between the main building and the river is another deposit for grain in bags about 20 by 10 metres capable of holding 75,000 bags in this building is an iron bin 2.70 in diameter and 10 metres high, this is to receive wheat from any of the bins in the main deposit in order to be bagged.

This can be done at the rate of 3,000 cwt. per hour, and if necessary can be sent directly on board of a ship over bands arranged for that purpose.

Dr. Diplock, coroner, is at present engaged in his investigation into the circumstances connected with the death of a young married woman, Mrs. Julia Gillin, residing in...

Sentence has been pronounced in the various petty cases referred to the Queen's Bench Division. Messrs. May and Blair, who were agents in the Macleod's election...

Notice is hereby given that applications for the office of Justice of the Peace for the district of the City of Buenos Aires, to be held on the 1st of January, 1882, will be received at the office of the Registrar of the Court of Justice...

Notice is hereby given that applications for the office of Justice of the Peace for the district of the City of Buenos Aires, to be held on the 1st of January, 1882, will be received at the office of the Registrar of the Court of Justice...

North British and Mercantile Insurance Company

Resources of the Company as at 31st Dec. 1880. I. Subscribed Capital £2,000,000. II. Reserve Fund £44,576 19 11. III. Life Fund £3,388,533 14 2.

Central Racing Club

The Autumn Meeting will be held on 18th and 19th May 1882. Programme: FIRST RACE-CHOLLO RACE. SECOND RACE-La Posta. THIRD RACE-Transandino Handicap.

WATSON'S HOTEL

Belgrano. Lavalle 46 to 58. One square from the Tramway. For Christmas and New Year's Day. Watson's famous Plum Cakes, ones they are sure to come again.

The Netherlands, Fire Insurance Company

ZUTHRAN (HOLLAND). Capital, 2,000,000 florins. Agent in the River Plate: J. DE BOER, Calle San Martín 73, a/cos, BUENOS AYRES.

AU MÉRINO. A TRUSTWORTHY HOUSE

Fixed Prices. Speciality, History of all kinds. Underclothing for men and children; Table and toilet cloths; Under-shirts and drawers of flannel, thread cotton and silk.

L'UNIVERSELLE

AL LADO DE LA BOLSA. CASA AMUEBLADA Y BANOS. HYDROTHERAPIA. 5 pesos Banos de lluvia 5 pesos. 148--SAN MARTIN--118.

ROSARIO

THE ROSARIO ELEVATOR. This splendid establishment, the last expression of the agricultural civilization of the 19th Century, was duly inaugurated and opened to the public yesterday by the Governor of the Province and the Directors of the Company.

La Fo ciere

Marine Insurance Company. Capital 25,000,000 Francs. Agent in the River Plate: J. DE BOER, Calle San Martín 73, a/cos, BUENOS AYRES.

The Children's Garden

832--Belgrano--832. This old and renowned house invites an inspection of its large and varied assortment of Christmas Presents.

Conserving Salt

Mark, 'Corona'. Patented by the Government of Germany. The purest and best of all salts for preserving food.

PER DIRECT STEAMER

New York. Following new numbers of Souda and Franklin Square. The Souda is a Flag by the author of Dora Morro.

ESLANCIERO

Proban La Infalible de Juan Ezequiel y sus ovejales sanos de vacas. No deviene en importe ni en su funcionamiento.

Notice to Smokers

The CIGARREROS DEL FUMADOR. The CIGARREROS DEL FUMADOR. The CIGARREROS DEL FUMADOR.

William A. Isard

Surgeon Dentist. Licentiate of the Royal College of Surgeons, England. Artificial Teeth supplied Electric Mallet in use.

Flores Collegiate School

This School, which was opened on Monday November 21, 1879, is under the direction of the English Chaplain of Flores. Its object is to supply the want of a high class English education in this city.

COINAS ECONOMICAS

Inglas Smith & Wellstood. Las monedas economicas son comodes y elegantes, que como ya han variado sin cesar, venden por no nos duelen.

St. John's Anglican Church

Notice is hereby given that applications for the office of Justice of the Peace for the district of the City of Buenos Aires, to be held on the 1st of January, 1882, will be received at the office of the Registrar of the Court of Justice...

NEWLAND BROTHERS

NORTH AMERICAN DENTISTS. 63--FLORIDA--63. Equina Piedad. Splendid Colt.

Antonio G. Frers y Cia

Aviata los Señores Frers y Cia, quienes que se ocupan de la venta de todo género de mercancías, y en especial de las de primera necesidad.

Ricardo Notling

PROFESOR DE YOGA Y GIMNASIA. Calle San Martín No. 31, (cuarto No. 2). CABLE PUEBLO No. 530. 8112 Ufr.

PER DIRECT STEAMER

New York. Following new numbers of Souda and Franklin Square. The Souda is a Flag by the author of Dora Morro.

ESLANCIERO

Proban La Infalible de Juan Ezequiel y sus ovejales sanos de vacas. No deviene en importe ni en su funcionamiento.

Notice to Smokers

The CIGARREROS DEL FUMADOR. The CIGARREROS DEL FUMADOR. The CIGARREROS DEL FUMADOR.

William A. Isard

Surgeon Dentist. Licentiate of the Royal College of Surgeons, England. Artificial Teeth supplied Electric Mallet in use.

Flores Collegiate School

This School, which was opened on Monday November 21, 1879, is under the direction of the English Chaplain of Flores. Its object is to supply the want of a high class English education in this city.

COINAS ECONOMICAS

Inglas Smith & Wellstood. Las monedas economicas son comodes y elegantes, que como ya han variado sin cesar, venden por no nos duelen.

St. John's Anglican Church

Notice is hereby given that applications for the office of Justice of the Peace for the district of the City of Buenos Aires, to be held on the 1st of January, 1882, will be received at the office of the Registrar of the Court of Justice...

NEWLAND BROTHERS

NORTH AMERICAN DENTISTS. 63--FLORIDA--63. Equina Piedad. Splendid Colt.

Antonio G. Frers y Cia

Aviata los Señores Frers y Cia, quienes que se ocupan de la venta de todo género de mercancías, y en especial de las de primera necesidad.

Ricardo Notling

PROFESOR DE YOGA Y GIMNASIA. Calle San Martín No. 31, (cuarto No. 2). CABLE PUEBLO No. 530. 8112 Ufr.

PER DIRECT STEAMER

New York. Following new numbers of Souda and Franklin Square. The Souda is a Flag by the author of Dora Morro.

ESLANCIERO

Proban La Infalible de Juan Ezequiel y sus ovejales sanos de vacas. No deviene en importe ni en su funcionamiento.

Notice to Smokers

The CIGARREROS DEL FUMADOR. The CIGARREROS DEL FUMADOR. The CIGARREROS DEL FUMADOR.

William A. Isard

Surgeon Dentist. Licentiate of the Royal College of Surgeons, England. Artificial Teeth supplied Electric Mallet in use.

Flores Collegiate School

This School, which was opened on Monday November 21, 1879, is under the direction of the English Chaplain of Flores. Its object is to supply the want of a high class English education in this city.

COINAS ECONOMICAS

Inglas Smith & Wellstood. Las monedas economicas son comodes y elegantes, que como ya han variado sin cesar, venden por no nos duelen.

St. John's Anglican Church

Notice is hereby given that applications for the office of Justice of the Peace for the district of the City of Buenos Aires, to be held on the 1st of January, 1882, will be received at the office of the Registrar of the Court of Justice...

NEWLAND BROTHERS

NORTH AMERICAN DENTISTS. 63--FLORIDA--63. Equina Piedad. Splendid Colt.

Antonio G. Frers y Cia

Aviata los Señores Frers y Cia, quienes que se ocupan de la venta de todo género de mercancías, y en especial de las de primera necesidad.

Ricardo Notling

PROFESOR DE YOGA Y GIMNASIA. Calle San Martín No. 31, (cuarto No. 2). CABLE PUEBLO No. 530. 8112 Ufr.

FERRO-CARRIL DEL OESTE

Desde el 1° de Noviembre de 1881 hasta nuevo aviso, la marcha de los trenes será como sigue:

LINEA PRINCIPAL

Table with columns for SALIDAS (Departures) and REGRESOS (Returns) listing stations and times.

Table with columns for SALIDAS (Departures) and REGRESOS (Returns) listing stations and times.

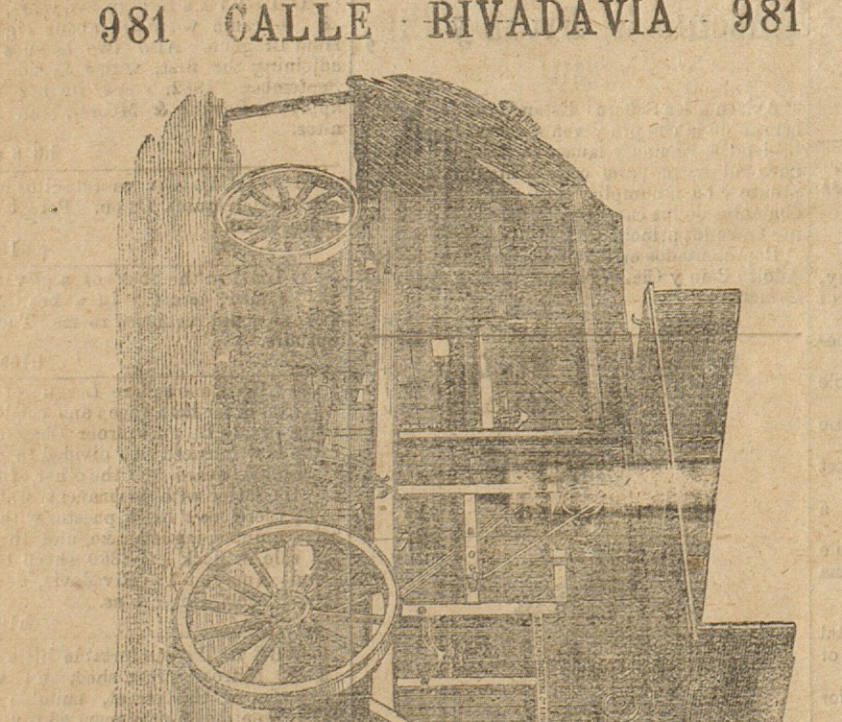
RAMAL LOBOS table with columns for SALIDAS and REGRESOS listing stations and times.

RAMAL PERGAMINO table with columns for SALIDAS and REGRESOS listing stations and times.

NOTA - Los trenes pararán en Almagro, Caballito, Flores, Liniers, Ituzaingó, Maipú y General Hornos...

DEPOSITO DE MOTORES Y MAQUINAS DE AGRICULTURA

981 CALLE RIVADAVIA 981



BUSTON PROCTOR Y CIA

As the season is advancing we call attention to our Thrashers, they have an extra Scoring and Riddle Surface...

M. FORRESTER & Co. 185 - Calle Piedad - 187

CHAMPAGNE. WEIDSIECK & CO'S

DRY MONOPOLE. HERCULES BAYON & CO., LONDON - SOLE AGENTS FOR GREAT BRITAIN, INDIA AND THE COLONIES.

COMPANIA DE FIVES-LILLE (FRANCIA)

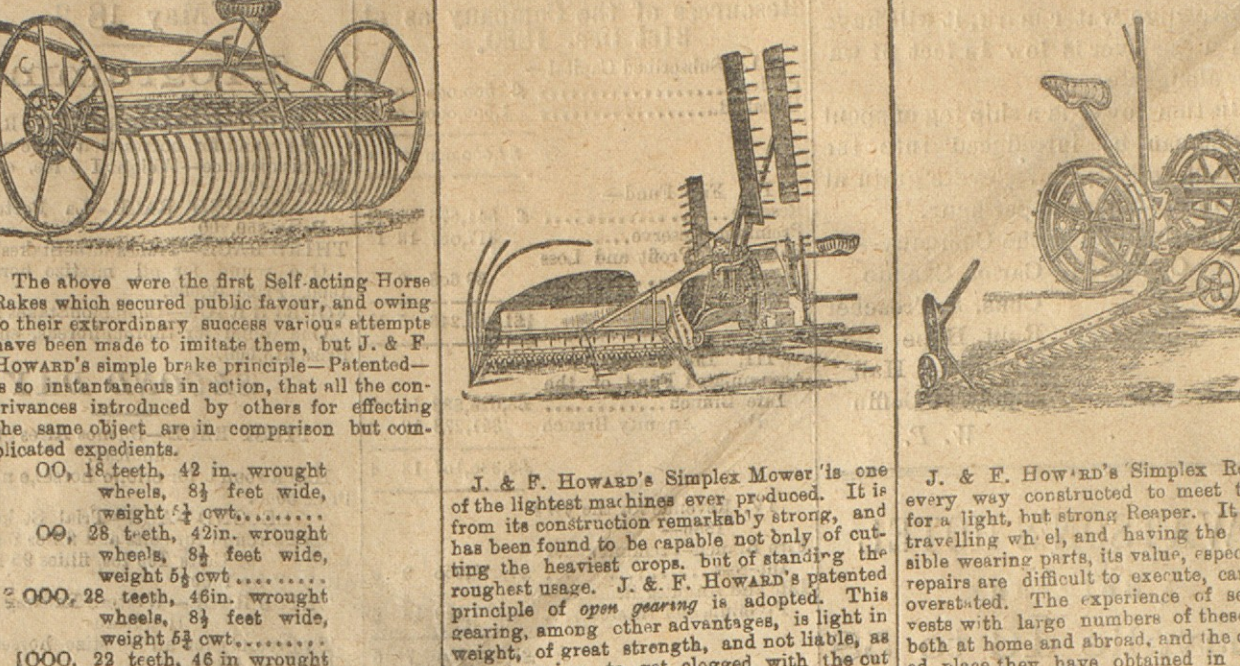
Sociedad Anonima con el capital de 12.000.000 FCS. OBRAS METALURGICAS, CONSTRUCCIONES MECANICAS Y EMPRESAS.

INGENIOS DE AZUCAE AGENCIA PARA LA REPUBLICA ARGENTINA

PORTALIS FRERES & CARBONNIER. 166 - Calle General Lavalle - 166.

HOWARD'S CELEBRATED MACHINES

Howards' Self-Acting Horse Rakes. Howard's New Patent Simplex Mower. Howard's New Patent Simplex Reaper.



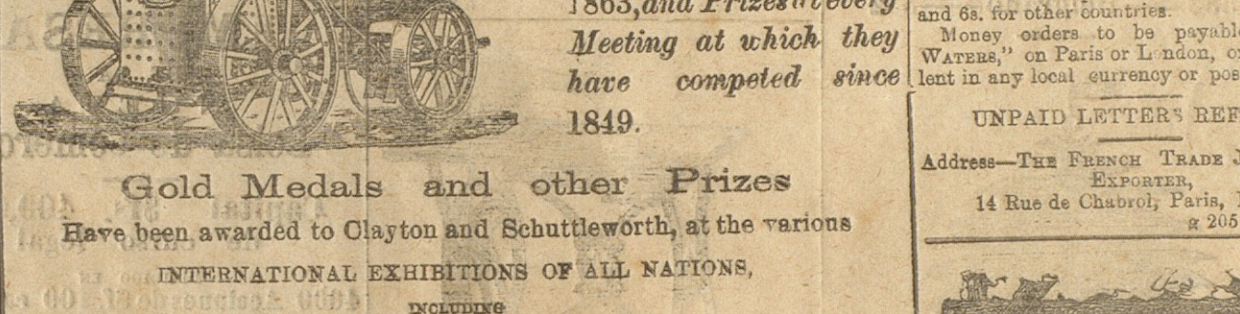
The above machines kept in stock by the Principal Hardware Merchants.

J. & F. HOWARD, BEDFORD AND LONDON

Descriptive and Illustrated Catalogues Post Free.

Melbourne (Australia) Exhibition

Portable Engine, Gold Medal. Threshing Machine, Gold Medal. The Royal Agricultural Society of England have awarded Every First Prize to Clayton & Shuttleworth...



Gold Medals and other Prizes. Have been awarded to Clayton and Shuttleworth, at the various INTERNATIONAL EXHIBITIONS OF ALL NATIONS.

STEAM ENGINES, (Portable or Fixed) (For Coals, Wood, Straw and every description of fuel).

THRASHING MACHINES GRINDING MILLS TRACTION ENGINES &c.

CLAYTON AND SHUTTLEWORTH, Stamp End Works, Lincoln, and 78, Lombard Street, LONDON.

Tomas Drysdale y Cia. Introducidos, Buenos Aires.

COARSEES FINOS. TODAS LAS MODERNAS DE INDIA. TODAS LAS CLASES.

PREMIOS DE LA RUE & CO'S CATALOGUE. THIS CATALOGUE OF STATIONERY AND STATIONERS' SUPPLIES IS DISTRIBUTED GRATIS AMONGST LARGE BUYERS AND SHIPPERS.

ASERRADERO A VAPOR DEL SUD. 486, 488 y 492 LIMA, y EUROPA 417.

DUCHER & BENDINGER. 486, 488 y 492 LIMA, y EUROPA 417.

JOSEPH OILWORKS STEEL PENS. CORNS, Alex Ross's Chirox o. Spanish Fly Oil, Cantharides.

Keating's Powder.

KILLERS BUGS, PLEAS, BEETLES, TICKS, COCKROACHES, BEETLES, MOLES IN POIS, and every other species of insect. THIS POWDER IS QUITE HARMLESS TO ANIMAL LIFE...

KEATING'S WORM TABLETS. KEATING'S WORM TABLETS. KEATING'S WORM TABLETS.

Carlow Lay College. ST. MARY'S PREPARATORY SCHOOL. In Carlow Lay College students are prepared for the Army, for the various professions, and for Degrees in Arts in the University of London.

THE FRENCH Trade Journal and Exporter. Produce Markets Review and General Prices Current.

J. & E. ATKINSON'S PERFUMERY. Sole Importers for the Argentine Republic, the Colonies and the West Indies.

ATKINSON'S FLORIDA WATER. ATKINSON'S QUININE HAIR LOTION. ATKINSON'S THERMAL ESSENCE OF LAVENDER.

ATKINSON'S WHITE BREAD. ATKINSON'S WHITE BREAD. ATKINSON'S WHITE BREAD.

ATKINSON'S WHITE BREAD. ATKINSON'S WHITE BREAD. ATKINSON'S WHITE BREAD.

ATKINSON'S WHITE BREAD. ATKINSON'S WHITE BREAD. ATKINSON'S WHITE BREAD.

ATKINSON'S WHITE BREAD. ATKINSON'S WHITE BREAD. ATKINSON'S WHITE BREAD.

ATKINSON'S WHITE BREAD. ATKINSON'S WHITE BREAD. ATKINSON'S WHITE BREAD.

ATKINSON'S WHITE BREAD. ATKINSON'S WHITE BREAD. ATKINSON'S WHITE BREAD.

ATKINSON'S WHITE BREAD. ATKINSON'S WHITE BREAD. ATKINSON'S WHITE BREAD.

ATKINSON'S WHITE BREAD. ATKINSON'S WHITE BREAD. ATKINSON'S WHITE BREAD.

ATKINSON'S WHITE BREAD. ATKINSON'S WHITE BREAD. ATKINSON'S WHITE BREAD.

Banco Hipotecario.

Está abierto al servicio público todos los días de 10 a 12 de la mañana de la mañana hasta las cuatro de la tarde. Presta sobre hipotecas con reembolso a largo plazo.

El Banco Hipotecario presta el dinero que produce una renta igual al interés que se le cobra. El valor del inmueble hipotecado no debe ser menor de \$1000 ni el préstamo menor de \$100.

Los préstamos hipotecarios no pueden exceder del 50% del valor del inmueble. El interés es de 10% anual.

El Banco Hipotecario presta el dinero que produce una renta igual al interés que se le cobra. El valor del inmueble hipotecado no debe ser menor de \$1000 ni el préstamo menor de \$100.

Los préstamos hipotecarios no pueden exceder del 50% del valor del inmueble. El interés es de 10% anual.

El Banco Hipotecario presta el dinero que produce una renta igual al interés que se le cobra. El valor del inmueble hipotecado no debe ser menor de \$1000 ni el préstamo menor de \$100.

Los préstamos hipotecarios no pueden exceder del 50% del valor del inmueble. El interés es de 10% anual.

El Banco Hipotecario presta el dinero que produce una renta igual al interés que se le cobra. El valor del inmueble hipotecado no debe ser menor de \$1000 ni el préstamo menor de \$100.

Los préstamos hipotecarios no pueden exceder del 50% del valor del inmueble. El interés es de 10% anual.

El Banco Hipotecario presta el dinero que produce una renta igual al interés que se le cobra. El valor del inmueble hipotecado no debe ser menor de \$1000 ni el préstamo menor de \$100.

Los préstamos hipotecarios no pueden exceder del 50% del valor del inmueble. El interés es de 10% anual.

El Banco Hipotecario presta el dinero que produce una renta igual al interés que se le cobra. El valor del inmueble hipotecado no debe ser menor de \$1000 ni el préstamo menor de \$100.

Los préstamos hipotecarios no pueden exceder del 50% del valor del inmueble. El interés es de 10% anual.

El Banco Hipotecario presta el dinero que produce una renta igual al interés que se le cobra. El valor del inmueble hipotecado no debe ser menor de \$1000 ni el préstamo menor de \$100.

Los préstamos hipotecarios no pueden exceder del 50% del valor del inmueble. El interés es de 10% anual.

London and River Plate Bank (LIMITED). London, Buenos Aires, Montevideo, Rosario and Córdoba. Capital \$1,000,000. Reserve Fund \$1,500,000.